

## CAPN2 Antibody

Catalog No: #31039

Package Size: #31039-1 50ul #31039-2 100ul

Orders: order@signalwayantibody.com

Support: tech@signalwayantibody.com

## Description

Product Name	CAPN2 Antibody
Host Species	Rabbit
Clonality	Polyclonal
Applications	ELISA WB
Species Reactivity	Hu Ms
Specificity	The antibody detects endogenous level of total CAPN2 protein.
Immunogen Type	Recombinant protein
Immunogen Description	Fusion protein corresponding to a region derived from 530-700 amino acids of Human Calpain-2 catalytic subunit
Target Name	CAPN2
Other Names	Calpain-2 catalytic subunit, CANP2, mCANP, CANPL2, CANPml
Accession No.	Swiss-Prot:P17655Gene ID:824;
Uniprot	P17655
GeneID	824;
Formulation	Rabbit IgG in pH7.4 PBS, 0.05% NaN <sub>3</sub> , 40% Glycerol.
Storage	Store at -20°C/1 year

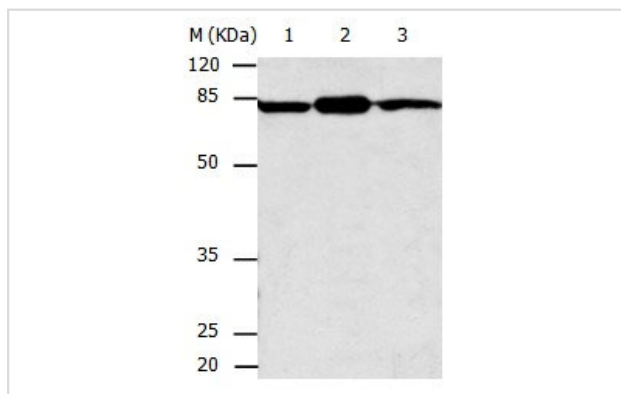
## Application Details

Predicted MW: 80kd

ELISA: 1:1000-1:5000

Western blotting: 1:200-1:1000

## Images



Gel: 10%SDS-PAGE

Lane1: Mouse brain tissue lysate

Lane2: 293T cell lysate

Lane3: Mouse skin tissue lysate

Lysates: 30ug per lane

Primary antibody: 1/400 dilution

Secondary antibody: Donkey anti Rabbit IgG - H&amp;L (HRP) at

1/3000 dilution

Exposure time: 40 seconds

## Background

The calpains, calcium-activated neutral proteases, are nonlysosomal, intracellular cysteine proteases. The mammalian calpains include ubiquitous,

stomach-specific, and muscle-specific proteins. The ubiquitous enzymes consist of heterodimers with distinct large, catalytic subunits associated with a common small, regulatory subunit. This gene encodes the large subunit of the ubiquitous enzyme, calpain 2. Multiple heterogeneous transcriptional start sites in the 5' UTR have been reported. Two transcript variants encoding different isoforms have been found for this gene.

---

Note: This product is for in vitro research use only