

CAP1 Antibody

Catalog No: #31042

Package Size: #31042-1 50ul #31042-2 100ul

Orders: order@signalwayantibody.com

Support: tech@signalwayantibody.com

Description

Product Name	CAP1 Antibody
Host Species	Rabbit
Clonality	Polyclonal
Applications	ELISA WB IHC
Species Reactivity	Hu Ms
Specificity	The antibody detects endogenous level of total CAP1 protein.
Immunogen Type	Recombinant Protein
Immunogen Description	Fusion protein corresponding to a region derived from 319-453 amino acids of Human Adenylyl cyclase-associated protein 1
Target Name	CAP1
Other Names	Adenylyl cyclase-associated protein 1, CAP, CAP1-PEN
Accession No.	Swiss-Prot:Q01518Gene ID:10487;
Uniprot	Q01518
GeneID	10487;
Formulation	Rabbit IgG in pH7.4 PBS, 0.05% NaN ₃ , 40% Glycerol.
Storage	Store at -20°C/1 year

Application Details

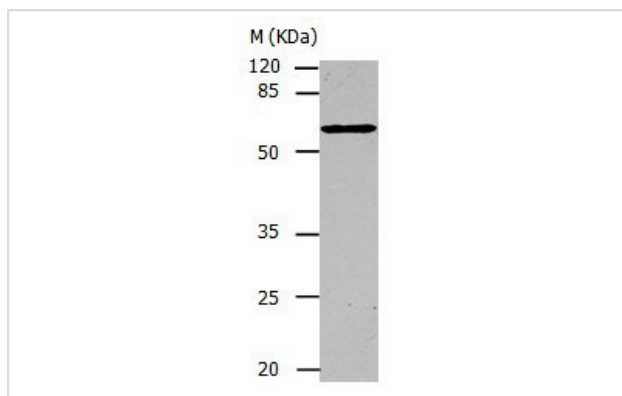
Predicted MW: 52kd

ELISA: 1:1000-1:5000

Western blotting: 1:200-1:1000

Immunohistochemistry: 1:25-1:100

Images



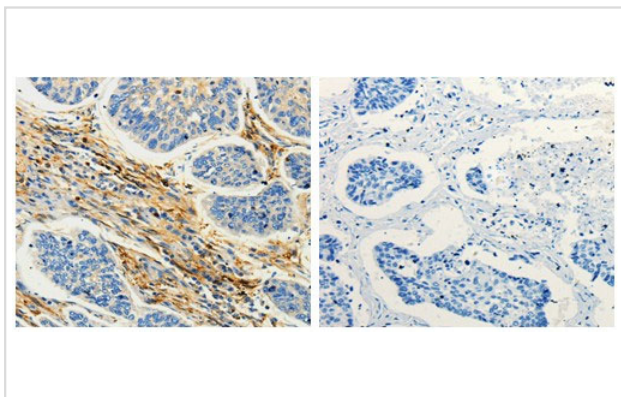
Gel: 10%SDS-PAGE

Lysate: 30 µg NIH/3T3 cell lysate

Primary antibody: 1/150 dilution

Secondary antibody: Donkey anti Rabbit IgG - H&L (HRP) at 1/3000 dilution

Exposure time: 30 seconds



The image on the left is immunohistochemistry of paraffin-embedded Human lung cancer tissue using 31042 (CAP1 Antibody) at dilution 1/25, on the right is treated with the fusion protein.

Background

The protein encoded by this gene is related to the *S. cerevisiae* CAP protein, which is involved in the cyclic AMP pathway. The human protein is able to interact with other molecules of the same protein, as well as with CAP2 and actin. Alternatively spliced transcript variants have been identified.

Note: This product is for in vitro research use only