

CA1 Antibody

Catalog No: #31043

Package Size: #31043-1 50ul #31043-2 100ul

Orders: order@signalwayantibody.com

Support: tech@signalwayantibody.com

Description

Product Name	CA1 Antibody
Host Species	Rabbit
Clonality	Polyclonal
Applications	ELISA WB
Species Reactivity	Hu Ms
Specificity	The antibody detects endogenous level of total CA1 protein.
Immunogen Type	Recombinant Protein
Immunogen Description	Full length fusion protein
Target Name	CA1
Other Names	Carbonic anhydrase 1, CAB, CA-I, Car1
Accession No.	Swiss-Prot:P00915Gene ID:759;
Uniprot	P00915
GeneID	759;
Concentration	0.3mg/ml
Formulation	Rabbit IgG in pH7.4 PBS, 0.05% NaN ₃ , 40% Glycerol.
Storage	Store at -20°C/1 year

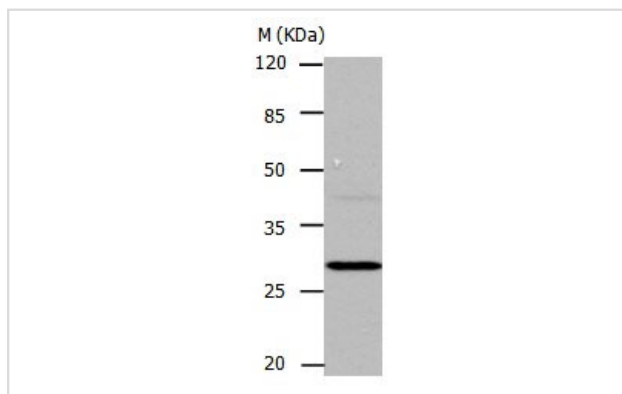
Application Details

Predicted MW: 29kd

ELISA: 1:2000-1:5000

Western blotting: 1:500-1:2000

Images



Gel: 10%SDS-PAGE

Lysate: 24 µg Mouse liver tissue lysate

Primary antibody: 1/450 dilution

Secondary antibody: Donkey anti Rabbit IgG - H&L (HRP) at 1/3000 dilution

Exposure time: 2 minutes

Background

Carbonic anhydrases (CAs) are a large family of zinc metalloenzymes that catalyze the reversible hydration of carbon dioxide. They participate in a

variety of biological processes, including respiration, calcification, acid-base balance, bone resorption, and the formation of aqueous humor, cerebrospinal fluid, saliva, and gastric acid. They show extensive diversity in tissue distribution and in their subcellular localization. CA1 is closely linked to CA2 and CA3 genes on chromosome 8, and it encodes a cytosolic protein which is found at the highest level in erythrocytes. Variants of this gene have been described in some populations. Multiple alternatively spliced variants, encoding the same protein, have been identified. Transcript variants of CA1 utilizing alternative polyA_sites have been described in literature.

Note: This product is for in vitro research use only