

CA2 Antibody

Catalog No: #31044

Package Size: #31044-1 50ul #31044-2 100ul

Orders: order@signalwayantibody.com

Support: tech@signalwayantibody.com

Description

Product Name	CA2 Antibody
Host Species	Rabbit
Clonality	Polyclonal
Applications	ELISA WB IHC
Species Reactivity	Hu Ms
Specificity	The antibody detects endogenous level of total CA2 protein.
Immunogen Type	Recombinant Protein
Immunogen Description	Full length fusion protein
Target Name	CA2
Other Names	carbonic anhydrase II, CAII, Car2, CA-II
Accession No.	Swiss-Prot:P00918Gene ID:760;
Uniprot	P00918
GeneID	760;
Concentration	0.3mg/ml
Formulation	Rabbit IgG in pH7.4 PBS, 0.05% NaN ₃ , 40% Glycerol.
Storage	Store at -20°C/1 year

Application Details

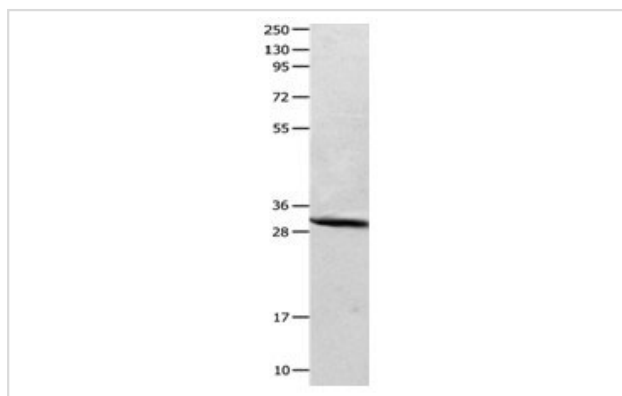
Predicted MW: 29kd

ELISA: 1:2000-1:10000

Western blotting: 1:1000-1:5000

Immunohistochemistry: 1:25-1:100

Images



Gel: 10%+12%SDS-PAGE

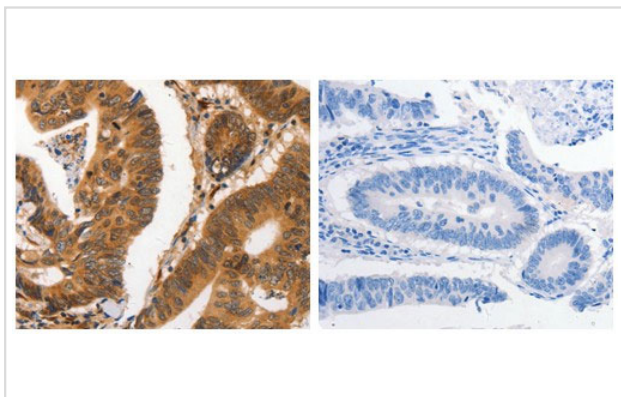
Lysate: 40 µg Mouse brain tissue lysate

Primary antibody: 1/300 dilution

Secondary antibody: Goat anti Rabbit IgG - H&L (HRP) at

1/10000 dilution

Exposure time: 1 second



The image on the left is immunohistochemistry of paraffin-embedded Human colon cancer tissue using 31044 (CA2 Antibody) at dilution 1/20, on the right is treated with the fusion protein.

Background

CA2 is one of several (at least 7) isozymes of carbonic anhydrase. Carbonic anhydrase catalyzes reversible hydration of carbon dioxide. Defects in this enzyme are associated with osteopetrosis and renal tubular acidosis. Essential for bone resorption and osteoclast differentiation. By similarity. Reversible hydration of carbon dioxide. Can hydrate cyanamide to urea. Involved in the regulation of fluid secretion into the anterior chamber of the eye.

Note: This product is for in vitro research use only