

CTSZ Antibody

Catalog No: #31047

Package Size: #31047-1 50ul #31047-2 100ul

Orders: order@signalwayantibody.com

Support: tech@signalwayantibody.com

Description

Product Name	CTSZ Antibody
Host Species	Rabbit
Clonality	Polyclonal
Applications	ELISA WB IHC
Species Reactivity	Hu
Specificity	The antibody detects endogenous level of total CTSZ protein.
Immunogen Type	Recombinant Protein
Immunogen Description	Fusion protein corresponding to a region derived from 62-303 amino acids of Human Cathepsin Z
Target Name	CTSZ
Other Names	Cathepsin Z, CTSX
Accession No.	Swiss-Prot:Q9UBR2Gene ID:1522;
Uniprot	Q9UBR2
GeneID	1522;
Formulation	Rabbit IgG in pH7.4 PBS, 0.05% NaN ₃ , 40% Glycerol.
Storage	Store at -20°C/1 year

Application Details

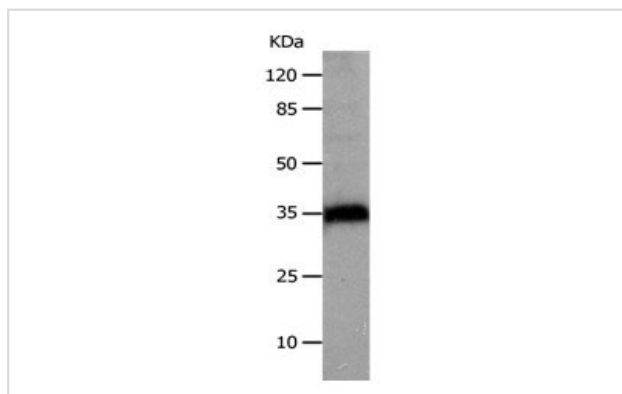
Predicted MW: 34kd

ELISA: 1:500-1:2000

Western blotting: 1:500-1:1000

Immunohistochemistry: 1:10-1:50

Images



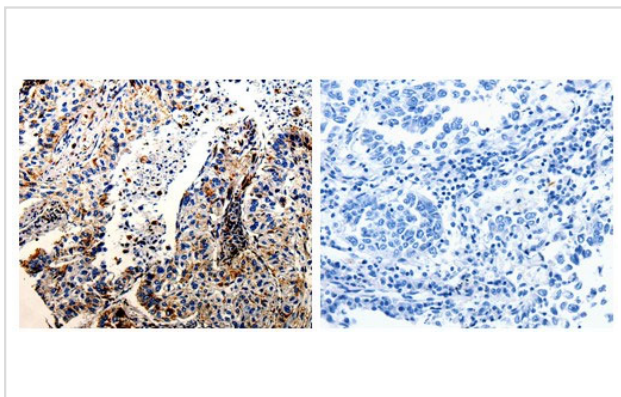
Gel: 8%SDS-PAGE

Lysate: 30 µg Hela cell lysate

Primary antibody: 1/500 dilution

Secondary antibody: Donkey anti Rabbit IgG - H&L (HRP) at 1/3000 dilution

Exposure time: 20 seconds



The image on the left is immunohistochemistry of paraffin-embedded Human lung cancer tissue using 31047 (CTSZ Antibody) at dilution 1/25, on the right is treated with the fusion protein.

Background

The protein encoded by this gene is a lysosomal cysteine proteinase and member of the peptidase C1 family. It exhibits both carboxy-monopeptidase and carboxy-dipeptidase activities. The encoded protein has also been known as cathepsin X and cathepsin P. This gene is expressed ubiquitously in cancer cell lines and primary tumors and, like other members of this family, may be involved in tumorigenesis.

Note: This product is for in vitro research use only