

CBX5 Antibody

Catalog No: #31049

Package Size: #31049-1 50ul #31049-2 100ul

Orders: order@signalwayantibody.com

Support: tech@signalwayantibody.com

Description

Product Name	CBX5 Antibody
Host Species	Rabbit
Clonality	Polyclonal
Applications	ELISA WB
Species Reactivity	Hu
Specificity	The antibody detects endogenous level of total CBX5 protein.
Immunogen Type	Recombinant protein
Immunogen Description	Full length fusion protein
Target Name	CBX5
Other Names	Chromobox protein homolog 5, HP1, HP1A
Accession No.	Swiss-Prot:P45973Gene ID:23468;
Uniprot	P45973
GeneID	23468;
Formulation	Rabbit IgG in pH7.4 PBS, 0.05% NaN ₃ , 40% Glycerol.
Storage	Store at -20°C/1 year

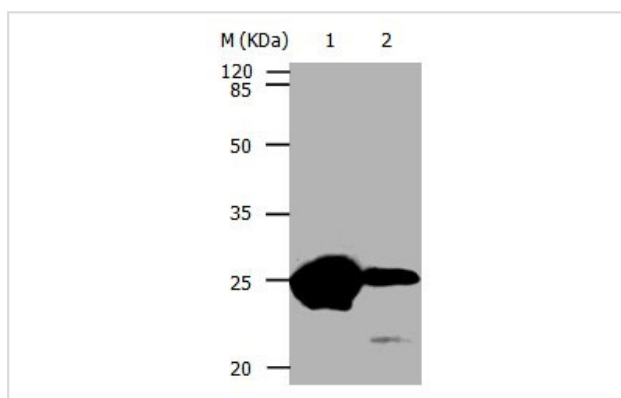
Application Details

Predicted MW: 22kd

ELISA: 1:1000-1:5000

Western blotting: 1:200-1:1000

Images



Gel: 10%SDS-PAGE

Lane1: Hela cell lysate

Lane2: Human endometrial cancer tissue lysate

Lysates: 24 ug per lane

Primary antibody: 1/300 dilution

Secondary antibody: Donkey anti Rabbit IgG - H&L (HRP) at 1/3000 dilution

Exposure time: 1 minute

Background

This gene encodes a highly conserved nonhistone protein, which is a member of the heterochromatin protein family. The protein is enriched in the heterochromatin and associated with centromeres. The protein has a single N-terminal chromodomain which can bind to histone proteins via

methylated lysine residues, and a C-terminal chromo shadow-domain (CSD) which is responsible for the homodimerization and interaction with a number of chromatin-associated nonhistone proteins. The encoded product is involved in the formation of functional kinetochore through interaction with essential kinetochore proteins. The gene has a pseudogene located on chromosome 3. Multiple alternatively spliced variants, encoding the same protein, have been identified.

Note: This product is for in vitro research use only