

## CBX2 Antibody

Catalog No: #31050

Package Size: #31050-1 50ul #31050-2 100ul

Orders: order@signalwayantibody.com

Support: tech@signalwayantibody.com

## Description

Product Name	CBX2 Antibody
Host Species	Rabbit
Clonality	Polyclonal
Applications	ELISA WB
Species Reactivity	Hu Ms
Specificity	The antibody detects endogenous level of total CBX2 protein.
Immunogen Type	Recombinant protein
Immunogen Description	Full length fusion protein
Target Name	CBX2
Other Names	chromobox homolog 2, M33, CDCA6, SRXY5
Accession No.	Swiss-Prot:Q14781Gene ID:84733;
Uniprot	Q14781
GeneID	84733;
Concentration	0.72mg/ml
Formulation	Rabbit IgG in pH7.4 PBS, 0.05% NaN <sub>3</sub> , 40% Glycerol.
Storage	Store at -20°C/1 year

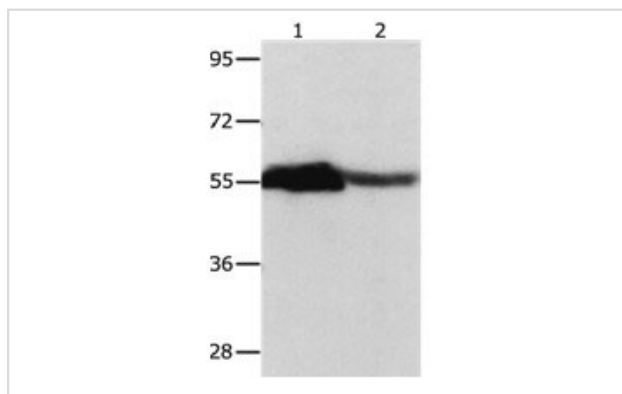
## Application Details

Predicted MW: 23kd

ELISA: 1:1000-1:5000

Western blotting: 1:500-1:2000

## Images



Gel: 12+10%SDS-PAGE

Lane1: Human ovarian cancer tissue lysate

Lane2: Mouse heart tissue lysate

Lysates: 30ug per lane

Primary antibody: 1/350 dilution

Secondary antibody: Goat anti Rabbit IgG - H&amp;L (HRP) at 1/10000 dilution

Exposure time: 20 seconds

## Background

This gene encodes a component of the polycomb multiprotein complex, which is required to maintain the transcriptionally repressive state of many

genes throughout development via chromatin remodeling and modification of histones. Disruption of this gene in mice results in male-to-female gonadal sex reversal. Mutations in this gene are also associated with gonadal dysgenesis in humans. Alternatively spliced transcript variants encoding different isoforms have been noted for this gene.

---

Note: This product is for in vitro research use only