

CCL13 Antibody

Catalog No: #31051

Package Size: #31051-1 50ul #31051-2 100ul

Orders: order@signalwayantibody.com

Support: tech@signalwayantibody.com

Description

Product Name	CCL13 Antibody
Host Species	Rabbit
Clonality	Polyclonal
Applications	ELISA WB
Species Reactivity	Hu
Specificity	The antibody detects endogenous level of total CCL13 protein.
Immunogen Type	Recombinant Protein
Immunogen Description	Fusion protein corresponding to a region derived from 17-98 amino acids of human chemokine (C-C motif) ligand 13chemokine (C-C motif) ligand 13
Target Name	CCL13
Other Names	chemokine (C-C motif) ligand 13, NCC1, CKb10, MCP-4, NCC-1, SCYL1, SCYA13
Accession No.	Swiss-Prot:Q99616Gene ID:6357;
Uniprot	Q99616
GeneID	6357;
Formulation	Rabbit IgG in pH7.4 PBS, 0.05% NaN ₃ , 40% Glycerol.
Storage	Store at -20°C/1 year

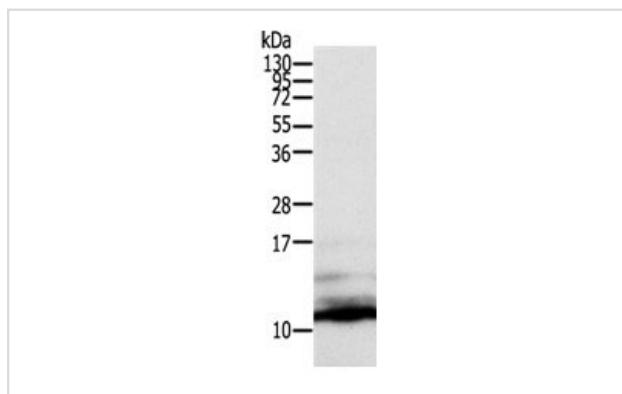
Application Details

Predicted MW: 11kd

ELISA: 1:2000-1:5000

Western blotting: 1:500-1:2000

Images



Gel: 12%SDS-PAGE

Lysate: 50 µg 293T cell lysate

Primary antibody: 1/900dilution

Secondary antibody: Goat anti Rabbit IgG - H&L (HRP) at 1/10000 dilution

Exposure time: 10 seconds

Background

This gene is one of several Cys-Cys (CC) cytokine genes clustered on the q-arm of chromosome 17. Cytokines are a family of secreted proteins

involved in immunoregulatory and inflammatory processes. The CC cytokines are proteins characterized by two adjacent cysteines. The cytokine encoded by this gene displays chemotactic activity for monocytes, lymphocytes, basophils and eosinophils, but not neutrophils. This chemokine plays a role in accumulation of leukocytes during inflammation. It may also be involved in the recruitment of monocytes into the arterial wall during arteriosclerosis.

Note: This product is for in vitro research use only