

CDC20 Antibody

Catalog No: #31052

Package Size: #31052-1 50ul #31052-2 100ul

Orders: order@signalwayantibody.com

Support: tech@signalwayantibody.com

Description

Product Name	CDC20 Antibody
Host Species	Rabbit
Clonality	Polyclonal
Applications	ELISA WB IHC
Species Reactivity	Hu
Specificity	The antibody detects endogenous level of total CDC20 protein.
Immunogen Type	Recombinant protein
Immunogen Description	Fusion protein corresponding to a region derived from 182-480 amino acids of Human Cell division cycle protein 20 homolog
Target Name	CDC20
Other Names	Cell division cycle protein 20 homolog, CDC20A, p55CDC, bA276H19.3
Accession No.	Swiss-Prot:Q12834Gene ID:991;
Uniprot	Q12834
GeneID	991;
Formulation	Rabbit IgG in pH7.4 PBS, 0.05% NaN ₃ , 40% Glycerol.
Storage	Store at -20°C/1 year

Application Details

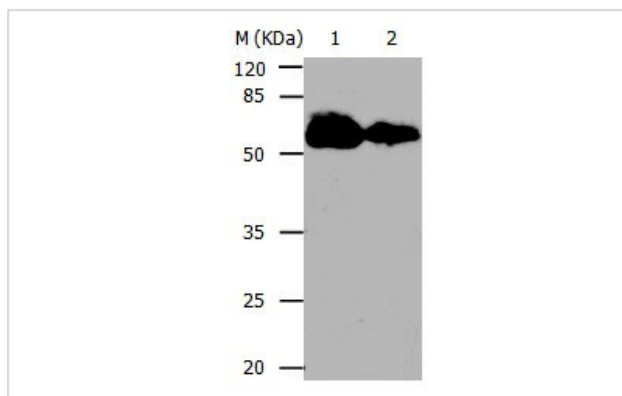
Predicted MW: 55kd

ELISA: 1:1000-1:5000

Western blotting: 1:500-1:2000

Immunohistochemistry: 1:10-1:50

Images



Gel: 10%SDS-PAGE

Lane1: 293T cell lysate

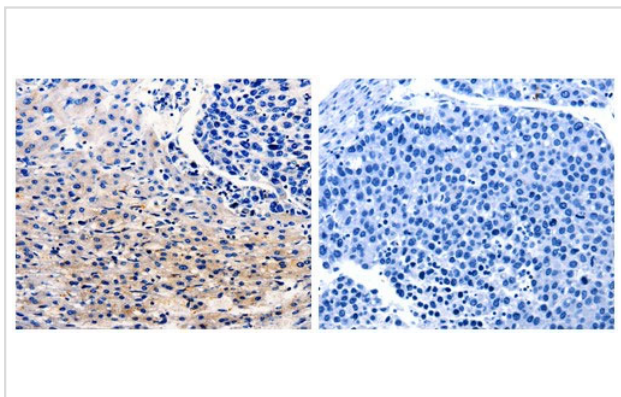
Lane2: Human cervical cancer tissue lysate

Lysates: 30ug per lane

Primary antibody: 1/600 dilution

Secondary antibody: Donkey anti Rabbit IgG - H&L (HRP) at 1/3000 dilution

Exposure time: 30 seconds



The image on the left is immunohistochemistry of paraffin-embedded Human liver cancer tissue using 31052(CDC20 Antibody) at dilution 1/10, on the right is treated with the fusion protein.

Background

CDC20 appears to act as a regulatory protein interacting with several other proteins at multiple points in the cell cycle. It is required for two microtubule-dependent processes, nuclear movement prior to anaphase and chromosome separation.

Note: This product is for in vitro research use only