

CSNK2A1 Antibody

Catalog No: #31057

Package Size: #31057-1 50ul #31057-2 100ul

Orders: order@signalwayantibody.com

Support: tech@signalwayantibody.com

Description

Product Name	CSNK2A1 Antibody
Host Species	Rabbit
Clonality	Polyclonal
Applications	ELISA WB IHC
Species Reactivity	Hu Ms Rt
Specificity	The antibody detects endogenous level of total CSNK2A1 protein.
Immunogen Type	Recombinant protein
Immunogen Description	Fusion protein corresponding to a region derived from 39-324 amino acids of human casein kinase 2, alpha 1 polypeptide
Target Name	CSNK2A1
Other Names	casein kinase 2, alpha 1 polypeptide, CKII, CK2A1
Accession No.	Swiss-Prot:P68400Gene ID:1457;
Uniprot	P68400
GeneID	1457;
Formulation	Rabbit IgG in pH7.4 PBS, 0.05% NaN ₃ , 40% Glycerol.
Storage	Store at -20°C/1 year

Application Details

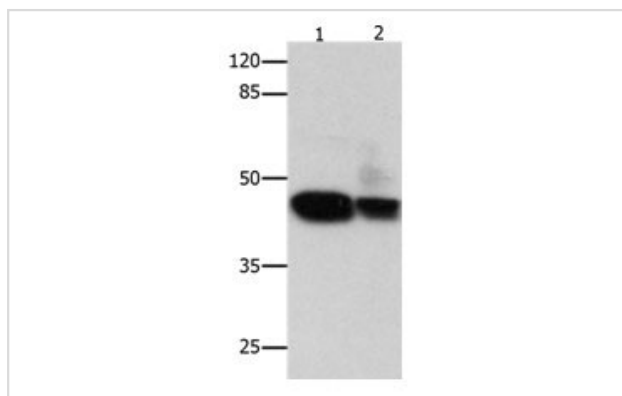
Predicted MW: 45kd

ELISA: 1:1000-1:5000

Western blotting: 1:500-1:2000

Immunohistochemistry: 1:50-1:150

Images



Gel: 10%SDS-PAGE

Lane1: Human liver cancer tissue lysate

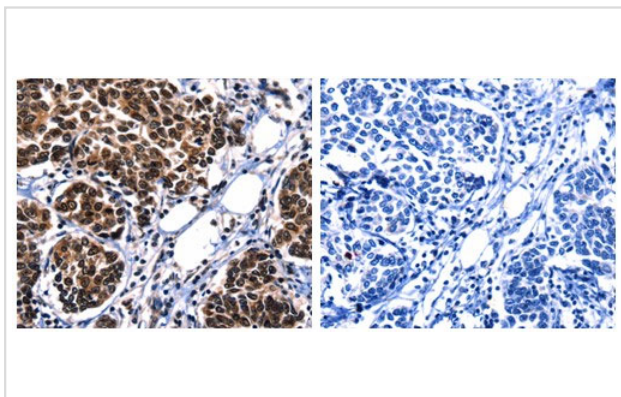
Lane2: Human bladder carcinoma tissue lysate

Lysates: 60 ug per lane

Primary antibody: 1/400 dilution

Secondary antibody: Goat anti Rabbit IgG - H&L (HRP) at 1/10000 dilution

Exposure time: 2 minutes



The image on the left is immunohistochemistry of paraffin-embedded human lung cancer tissue using 31057(CEACAM1 Antibody) at dilution 1/25, on the right is treated with the fusion protein.

Background

Casein kinase II is a serine/threonine protein kinase that phosphorylates acidic proteins such as casein. The kinase exists as a tetramer and is composed of an alpha, an alpha-prime, and two beta subunits. The alpha subunits contain the catalytic activity while the beta subunits undergo autophosphorylation. The protein encoded by this gene represents the alpha subunit. While this gene is found on chromosome 20, a related transcribed pseudogene is found on chromosome 11. Three transcript variants encoding two different proteins have been found for this gene.

Note: This product is for in vitro research use only