

## CLEC1A Antibody

Catalog No: #31058

Package Size: #31058-1 50ul #31058-2 100ul

Orders: order@signalwayantibody.com

Support: tech@signalwayantibody.com

## Description

Product Name	CLEC1A Antibody
Host Species	Rabbit
Clonality	Polyclonal
Applications	ELISA WB
Species Reactivity	Hu Ms
Specificity	The antibody detects endogenous level of total CLEC1A protein.
Immunogen Type	Recombinant protein
Immunogen Description	Fusion protein corresponding to a region derived from 144-258 amino acids of human C-type lectin domain family 1, member A
Target Name	CLEC1A
Other Names	C-type lectin domain family 1, member A, CLEC1
Accession No.	Swiss-Prot:Q8NC01Gene ID:51267;
Uniprot	Q8NC01
GeneID	51267;
Formulation	Rabbit IgG in pH7.4 PBS, 0.05% NaN <sub>3</sub> , 40% Glycerol.
Storage	Store at -20°C/1 year

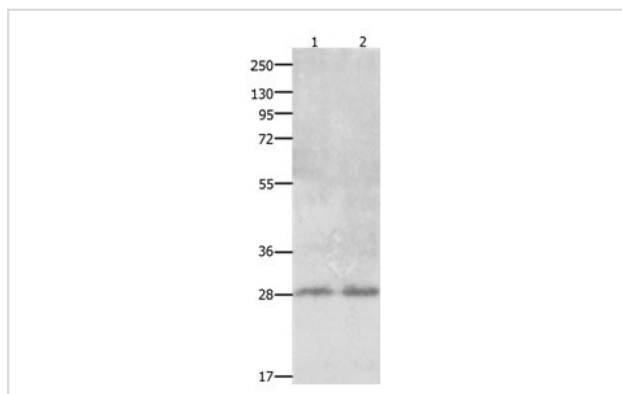
## Application Details

Predicted MW: 32kd

ELISA: 1:1000-1:5000

Western blotting: 1:500-1:2000

## Images



Gel: 12%+10%SDS-PAGE

Lane1: Mouse thymus tissue lysate

Lane2: Mouse lung tissue lysate

Lysates: 30 ug

Primary antibody: 1/850 dilution

Secondary antibody: Goat anti Rabbit IgG - H&amp;L (HRP) at 1/10000 dilution

Exposure time: 5 minutes

## Background

This gene encodes a member of the C-type lectin/C-type lectin-like domain (CTL/CTLD) superfamily. Members of this family share a common protein

fold and have diverse functions, such as cell adhesion, cell-cell signalling, glycoprotein turnover, and roles in inflammation and immune response. The encoded protein may play a role in regulating dendritic cell function. Alternative splice variants have been described but their biological nature has not been determined. This gene is closely linked to other CTL/CTLD superfamily members on chromosome 12p13 in the natural killer gene complex region.

---

Note: This product is for in vitro research use only