

## CLEC4D Antibody

Catalog No: #31059

Package Size: #31059-1 50ul #31059-2 100ul

Orders: order@signalwayantibody.com

Support: tech@signalwayantibody.com

## Description

Product Name	CLEC4D Antibody
Host Species	Rabbit
Clonality	Polyclonal
Applications	ELISA WB IHC
Species Reactivity	Hu
Specificity	The antibody detects endogenous level of total CLEC4D protein.
Immunogen Type	Recombinant protein
Immunogen Description	Fusion protein corresponding to a region derived from 39-215 amino acids of human C-type lectin domain family 4, member D
Target Name	CLEC4D
Other Names	C-type lectin domain family 4, member D, MCL, MPCL, CLEC6, CLEC-6, CLECSF8
Accession No.	Swiss-Prot:Q8WXI8Gene ID:338339;
Uniprot	Q8WXI8
GeneID	338339;
Formulation	Rabbit IgG in pH7.4 PBS, 0.05% NaN <sub>3</sub> , 40% Glycerol.
Storage	Store at -20°C/1 year

## Application Details

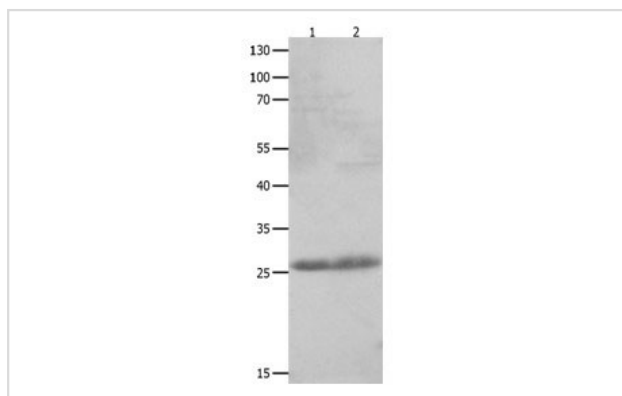
Predicted MW: 25kd

ELISA: 1:2000-1:10000

Western blotting: 1:1000-1:5000

Immunohistochemistry: 1:50-1:200

## Images



Gel: 12+10%SDS-PAGE

Lane1: Human fetal kidney tissue lysate

Lane2: Jurkat cell lysate

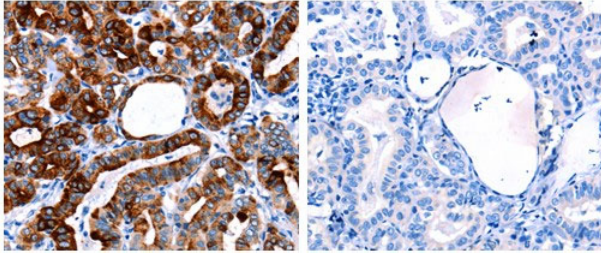
Lysates: 30 ug

Primary antibody: 1/1100 dilution

Secondary antibody: Goat anti Rabbit IgG - H&amp;L (HRP) at

1/10000 dilution

Exposure time: 30 seconds



The image on the left is immunohistochemistry of paraffin-embedded Human thyroid cancer tissue using 31059(CLEC4D Antibody) at dilution 1/50, on the right is treated with the fusion protein.

## Background

This gene encodes a member of the C-type lectin/C-type lectin-like domain (CTL/CTLD) superfamily. Members of this family share a common protein fold and have diverse functions, such as cell adhesion, cell-cell signalling, glycoprotein turnover, and roles in inflammation and immune response. This gene is closely linked to other CTL/CTLD superfamily members on chromosome 12p13 in the natural killer gene complex region.

Note: This product is for in vitro research use only