

LGALS1 Antibody

Catalog No: #31074

Package Size: #31074-1 50ul #31074-2 100ul

Orders: order@signalwayantibody.com

Support: tech@signalwayantibody.com

Description

Product Name	LGALS1 Antibody
Host Species	Rabbit
Clonality	Polyclonal
Applications	ELISA WB IHC
Species Reactivity	Hu
Specificity	The antibody detects endogenous level of total LGALS1 protein.
Immunogen Type	Recombinant Protein
Immunogen Description	Full length fusion protein
Target Name	LGALS1
Other Names	lectin, galactoside-binding, soluble, 1, GBP, GAL1
Accession No.	Swiss-Prot:P09382Gene ID:3956;
Uniprot	P09382
GeneID	3956;
Formulation	Rabbit IgG in pH7.4 PBS, 0.05% NaN ₃ , 40% Glycerol.
Storage	Store at -20°C/1 year

Application Details

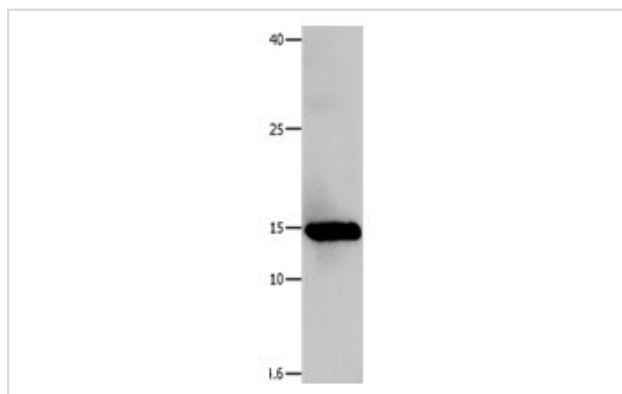
Predicted MW: 15kd

ELISA: 1:1000-1:5000

Western blotting: 1:500-1:2000

Immunohistochemistry: 1:25-1:100

Images



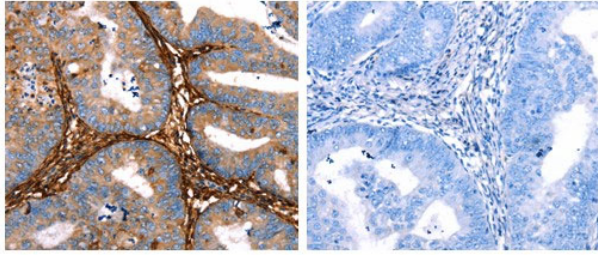
Gel: 15%+12%SDS-PAGE

Lysate: 40 µg Human fetal muscle tissue lysate

Primary antibody: 1/500 dilution

Secondary antibody: Goat anti Rabbit IgG - H&L (HRP) at 1/10000 dilution

Exposure time: 10 seconds



The image on the left is immunohistochemistry of paraffin-embedded Human cervical cancer tissue using 31074(LGALS1 Antibody) at dilution 1/25, on the right is treated with the fusion protein.

Background

The galectins are a family of beta-galactoside-binding proteins implicated in modulating cell-cell and cell-matrix interactions. This gene product may act as an autocrine negative growth factor that regulates cell proliferation. May regulate apoptosis, cell proliferation and cell differentiation. Binds beta-galactoside and a wide array of complex carbohydrates. Inhibits CD45 protein phosphatase activity and therefore the dephosphorylation of Lyn kinase.

Note: This product is for in vitro research use only