

GRK4 Antibody

Catalog No: #31076

Package Size: #31076-1 50ul #31076-2 100ul

Orders: order@signalwayantibody.com

Support: tech@signalwayantibody.com

Description

Product Name	GRK4 Antibody
Host Species	Rabbit
Clonality	Polyclonal
Applications	ELISA WB IHC
Species Reactivity	Hu
Specificity	The antibody detects endogenous level of total GRK4 protein.
Immunogen Type	Recombinant protein
Immunogen Description	Fusion protein corresponding to a region derived from 36-145 amino acids of human G protein-coupled receptor kinase 4
Target Name	GRK4
Other Names	G protein-coupled receptor kinase 4, IT11; GPRK4; GRK4a; GPRK2L
Formulation	Rabbit IgG in pH7.4 PBS, 0.05% NaN ₃ , 40% Glycerol.
Storage	Store at -20°C/1 year

Application Details

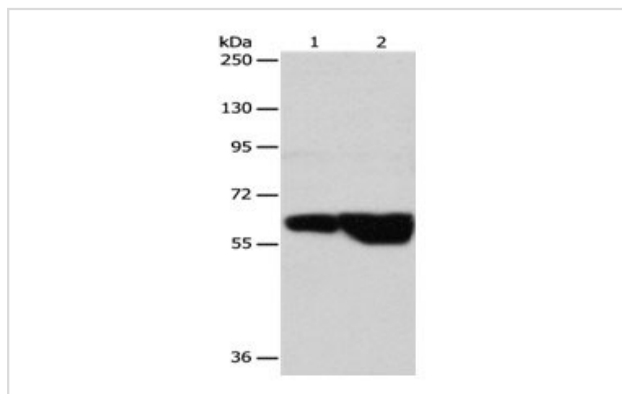
Predicted MW: 66kd

ELISA: 1:2000-1:10000

Western blotting: 1:1000-1:5000

Immunohistochemistry: 1:50-1:200

Images



Gel: 10%SDS-PAGE

Lane1: HeLa cell lysate

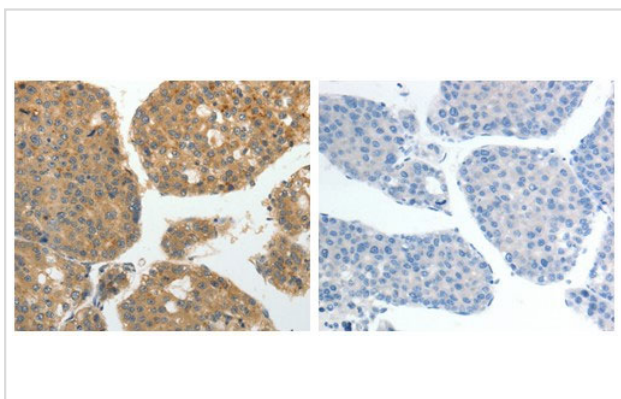
Lane2: Jurkat cell lysate

Lysates: 40 ug per lane

Primary antibody: 1/700 dilution

Secondary antibody: Goat anti Rabbit IgG - H&L (HRP) at 1/10000 dilution

Exposure time: 40 seconds



The image on the left is immunohistochemistry of paraffin-embedded human liver cancer tissue using 31076 (GRK4 Antibody) at dilution 1/40, on the right is treated with the fusion protein.

Background

This gene encodes a member of the guanine nucleotide-binding protein (G protein)-coupled receptor kinase subfamily of the Ser/Thr protein kinase family. The protein phosphorylates the activated forms of G protein-coupled receptors thus initiating its deactivation. This gene has been linked to both genetic and acquired hypertension. Specifically phosphorylates the activated forms of G protein-coupled receptors. GRK4-alpha can phosphorylate rhodopsin and its activity is inhibited by calmodulin; the other three isoforms do not phosphorylate rhodopsin and do not interact with calmodulin. GRK4-alpha and GRK4-gamma phosphorylate DRD3. Phosphorylates ADRB2.

Note: This product is for in vitro research use only