

HMOX2 Antibody

Catalog No: #31081

Package Size: #31081-1 50ul #31081-2 100ul

Orders: order@signalwayantibody.com

Support: tech@signalwayantibody.com

Description

Product Name	HMOX2 Antibody
Host Species	Rabbit
Clonality	Polyclonal
Applications	ELISA WB
Species Reactivity	Hu
Specificity	The antibody detects endogenous level of total HMOX2 protein.
Immunogen Type	Recombinant Protein
Immunogen Description	Fusion protein corresponding to a region derived from 82-316 amino acids of human heme oxygenase (decycling) 2
Target Name	HMOX2
Other Names	heme oxygenase (decycling) 2, HO-2
Accession No.	Swiss-Prot:P30519Gene ID:3163;
Uniprot	P30519
GeneID	3163;
Formulation	Rabbit IgG in pH7.4 PBS, 0.05% NaN ₃ , 40% Glycerol.
Storage	Store at -20°C/1 year

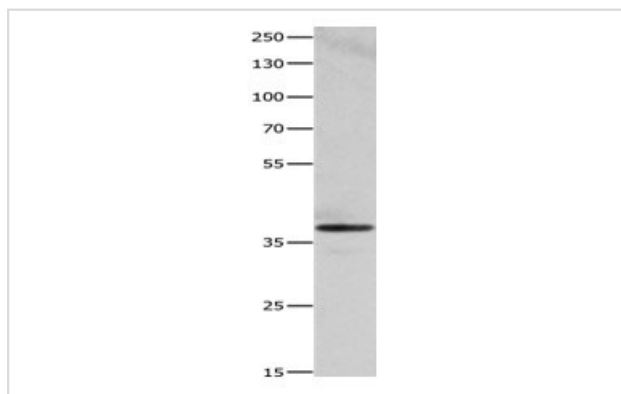
Application Details

Predicted MW: 36kd

ELISA: 1:1000-1:5000

Western blotting: 1:500-1:2000

Images



Gel: 10%SDS-PAGE
 Lysate: 30 µg HepG2 cell lysate
 Primary antibody: 1/500 dilution
 Secondary antibody: Goat anti Rabbit IgG - H&L (HRP) at 1/10000 dilution
 Exposure time: 15 seconds

Background

Heme oxygenase, an essential enzyme in heme catabolism, cleaves heme to form biliverdin, which is subsequently converted to bilirubin by biliverdin

reductase, and carbon monoxide, a putative neurotransmitter. Heme oxygenase activity is induced by its substrate heme and by various nonheme substances. Heme oxygenase occurs as 2 isozymes, an inducible heme oxygenase-1 and a constitutive heme oxygenase-2. HMOX1 and HMOX2 belong to the heme oxygenase family. Alternative splice variants encoding the same protein have been identified at this locus.?

Note: This product is for in vitro research use only