

## HPSE Antibody

Catalog No: #31082

Package Size: #31082-1 50ul #31082-2 100ul

Orders: order@signalwayantibody.com

Support: tech@signalwayantibody.com

## Description

Product Name	HPSE Antibody
Host Species	Rabbit
Clonality	Polyclonal
Applications	ELISA WB
Species Reactivity	Hu
Specificity	The antibody detects endogenous level of total HPSE protein.
Immunogen Type	Recombinant Protein
Immunogen Description	Fusion protein corresponding to a C terminal 250 amino acids of human heparanase
Target Name	HPSE
Other Names	heparanase, HPA, HPA1, HPR1, HSE1, HPSE1
Formulation	Rabbit IgG in pH7.4 PBS, 0.05% NaN <sub>3</sub> , 40% Glycerol.
Storage	Store at -20°C/1 year

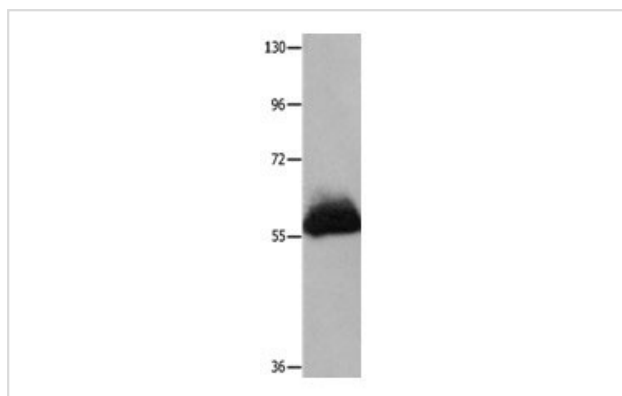
## Application Details

Predicted MW: 61kd

ELISA: 1:2000-1:5000

Western blotting: 1:500-1:2000

## Images



Gel: 10%SDS-PAGE

Lysate: 60 µg Human transitional cell carcinoma tissue lysate

Primary antibody: 1/100 dilution

Secondary antibody: Goat anti Rabbit IgG - H&amp;L (HRP) at

1/10000 dilution

Exposure time: 5 minutes

## Background

Heparan sulfate proteoglycans are major components of the basement membrane and extracellular matrix. The protein encoded by this gene is an enzyme that cleaves heparan sulfate proteoglycans to permit cell movement through remodeling of the extracellular matrix. In addition, this cleavage can release bioactive molecules from the extracellular matrix. Several transcript variants encoding different isoforms have been found for this gene.

---

Note: This product is for in vitro research use only