

## HP Antibody

Catalog No: #31083

Package Size: #31083-1 50ul #31083-2 100ul

Orders: [order@signalwayantibody.com](mailto:order@signalwayantibody.com)Support: [tech@signalwayantibody.com](mailto:tech@signalwayantibody.com)

## Description

Product Name	HP Antibody
Host Species	Rabbit
Clonality	Polyclonal
Applications	ELISA WB IHC
Species Reactivity	Hu
Specificity	The antibody detects endogenous level of total HP protein.
Immunogen Type	Recombinant Protein
Immunogen Description	Fusion protein corresponding to a region derived from 162-406 amino acids of human haptoglobin
Target Name	HP
Other Names	haptoglobin, BP, HPA1S, HP2ALPHA2
Accession No.	Swiss-Prot:P00738Gene ID:3240;
Uniprot	P00738
GeneID	3240;
Formulation	Rabbit IgG in pH7.4 PBS, 0.05% NaN <sub>3</sub> , 40% Glycerol.
Storage	Store at -20°C/1 year

## Application Details

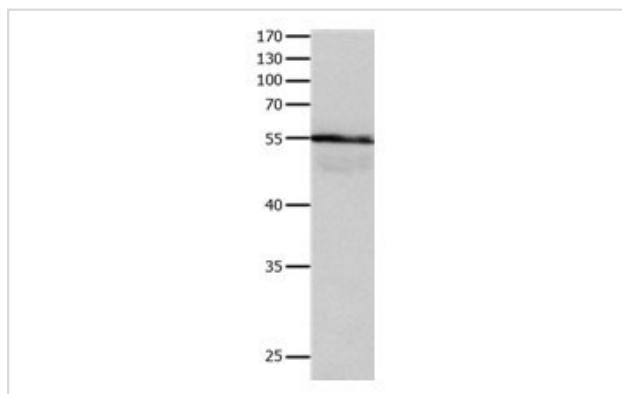
Predicted MW: 45kd

ELISA: 1:1000-1:5000

Western blotting: 1:200-1:1000

Immunohistochemistry: 1:25-1:100

## Images



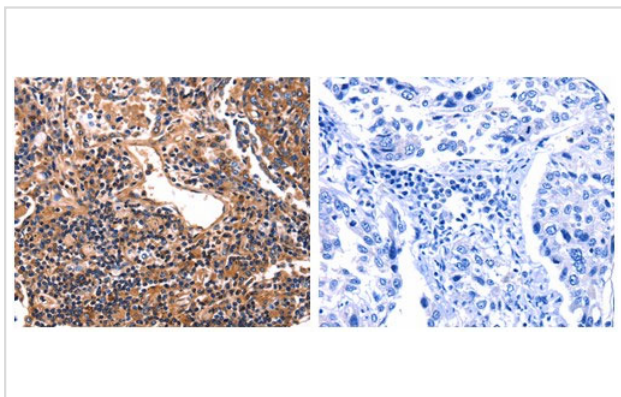
Gel: 10%SDS-PAGE

Lysate: 30 µg Human brain gliomas tissue lysate

Primary antibody: 1/400 dilution

Secondary antibody: Goat anti Rabbit IgG - H&amp;L (HRP) at 1/10000 dilution

Exposure time: 5 seconds



The image on the left is immunohistochemistry of paraffin-embedded Human lung cancer tissue using 31083 (HP Antibody) at dilution 1/25, on the right is treated with the fusion protein.

## Background

This gene encodes a preproprotein, which is processed to yield both alpha and beta chains, which subsequently combine as a tetramer to produce haptoglobin. Haptoglobin functions to bind free plasma hemoglobin, which allows degradative enzymes to gain access to the hemoglobin, while at the same time preventing loss of iron through the kidneys and protecting the kidneys from damage by hemoglobin. Mutations in this gene and/or its regulatory regions cause ahaptoglobinemia or hypohaptoglobinemia. This gene has also been linked to diabetic nephropathy, the incidence of coronary artery disease in type 1 diabetes, Crohn's disease, inflammatory disease behavior, primary sclerosing cholangitis, susceptibility to idiopathic Parkinson's disease, and a reduced incidence of *Plasmodium falciparum* malaria. A similar duplicated gene is located next to this gene on chromosome 16. Multiple transcript variants encoding different isoforms have been found for this gene.

Note: This product is for in vitro research use only