

AIF1 Antibody

Catalog No: #31086

Package Size: #31086-1 50ul #31086-2 100ul

Orders: order@signalwayantibody.com

Support: tech@signalwayantibody.com

Description

Product Name	AIF1 Antibody
Host Species	Rabbit
Clonality	Polyclonal
Applications	ELISA WB IHC
Species Reactivity	Hu
Specificity	The antibody detects endogenous level of total AIF1 protein.
Immunogen Type	Recombinant Protein
Immunogen Description	Full length fusion protein
Target Name	AIF1
Other Names	allograft inflammatory factor 1, IBA1, IRT1, AIF-1, IRT-1
Accession No.	Swiss-Prot:P55008Gene ID:199;
Uniprot	P55008
GeneID	199;
Formulation	Rabbit IgG in pH7.4 PBS, 0.05% NaN ₃ , 40% Glycerol.
Storage	Store at -20°C/1 year

Application Details

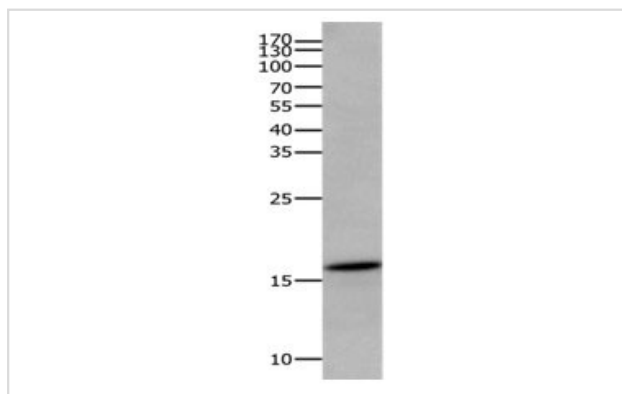
Predicted MW: 17kd

ELISA: 1:1000-1:5000

Western blotting: 1:200-1:1000

Immunohistochemistry: 1:25-1:100

Images



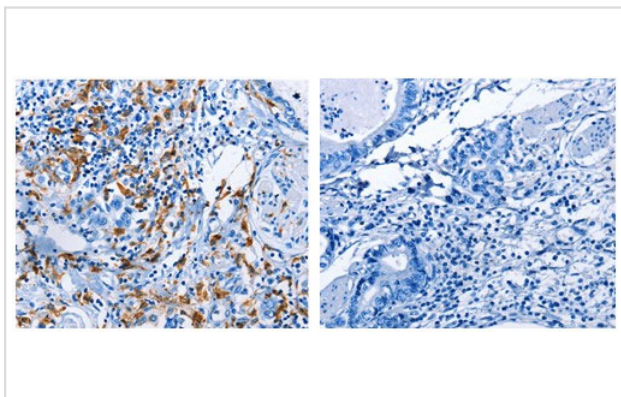
Gel: 15%+12%SDS-PAGE

Lysate: 15 µg human lymphoma tissue lysate

Primary antibody: 1/400 dilution

Secondary antibody: Goat anti Rabbit IgG - H&L (HRP) at 1/10000 dilution

Exposure time: 5 minutes



The image on the left is immunohistochemistry of paraffin-embedded Human stomach cancer tissue using 31086(AIF1 Antibody) at dilution 1/25, on the right is treated with the fusion protein.

Background

This gene is induced by cytokines and interferon. Its protein product is thought to be involved in negative regulation of growth of vascular smooth muscle cells, which contributes to the anti-inflammatory response to vessel wall trauma. Three transcript variants encoding different isoforms have been found for this gene. Actin-binding protein that enhances membrane ruffling and RAC activation. Enhances the actin-bundling activity of LCP1. Binds calcium. Plays a role in RAC signaling and in phagocytosis. May play a role in macrophage activation and function. Promotes the proliferation of vascular smooth muscle cells and of T-lymphocytes. Enhances lymphocyte migration. Plays a role in vascular inflammation.

Note: This product is for in vitro research use only