

IGF2BP2 Antibody

Catalog No: #31088

Package Size: #31088-1 50ul #31088-2 100ul

Orders: order@signalwayantibody.com

Support: tech@signalwayantibody.com

Description

Product Name	IGF2BP2 Antibody
Host Species	Rabbit
Clonality	Polyclonal
Applications	ELISA WB
Species Reactivity	Hu
Specificity	The antibody detects endogenous level of total IGF2BP2 protein.
Immunogen Type	Recombinant protein
Immunogen Description	Fusion protein corresponding to a region derived from 65-169 amino acids of human insulin-like growth factor 2 mRNA binding protein 2
Target Name	IGF2BP2
Other Names	insulin-like growth factor 2 mRNA binding protein 2, p62, IMP2, IMP-2, VICKZ2
Accession No.	Swiss-Prot:Q9Y6M1 Gene ID:10644;
Uniprot	Q9Y6M1
GeneID	10644;
Formulation	Rabbit IgG in pH7.4 PBS, 0.05% NaN ₃ , 40% Glycerol.
Storage	Store at -20°C/1 year

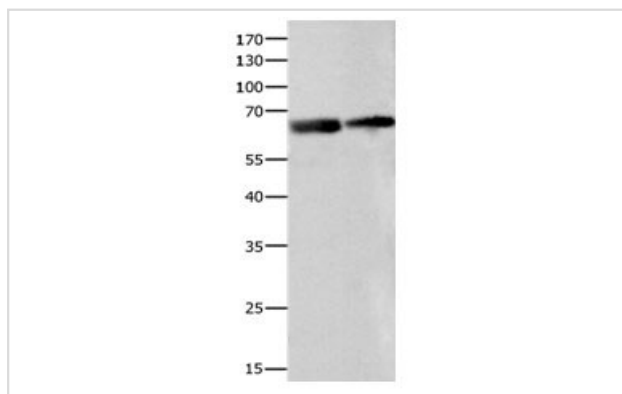
Application Details

Predicted MW: 66kd

ELISA: 1:1000-1:5000

Western blotting: 1:200-1:1000

Images



Gel: 8%SDS-PAGE

Lane1: Human liver cancer tissue lysate

Lane2: Human ovarian cancer tissue lysate

Lysates: 40 ug per lane

Primary antibody: 1/300 dilution

Secondary antibody: Goat anti Rabbit IgG - H&L (HRP) at 1/10000 dilution

Exposure time: 2 minutes

Background

This gene encodes a member of the IGF-II mRNA-binding protein (IMP) family. The protein encoded by this gene contains several four KH domains

and two RRM domains. It functions by binding to the 5' UTR of the insulin-like growth factor 2 (IGF2) mRNA and regulating IGF2 translation. Alternate transcriptional splice variants, encoding different isoforms, have been characterized. May regulate translation of target mRNAs.

Note: This product is for in vitro research use only