

## JAK1(Ab-1022) Antibody

Catalog No: #21119

Package Size: #21119-1 50ul #21119-2 100ul

Orders: order@signalwayantibody.com

Support: tech@signalwayantibody.com

## Description

Product Name	JAK1(Ab-1022) Antibody
Host Species	Rabbit
Clonality	Polyclonal
Purification	Antibodies were produced by immunizing rabbits with synthetic peptide and KLH conjugates. Antibodies were purified by affinity-chromatography using epitope-specific peptide.
Applications	WB IHC
Species Reactivity	Hu Ms Rt
Specificity	The antibody detects endogenous level of total JAK1 protein.
Immunogen Type	Peptide-KLH
Immunogen Description	Peptide sequence around aa. 1020~1024 (K-E-Y-Y-T) derived from Human JAK1.
Target Name	JAK1
Other Names	Janus kinase 1
Accession No.	Swiss-Prot: P23458NCBI Protein: NP_002218.2
Uniprot	P23458
GeneID	3716;
Concentration	1.0mg/ml
Formulation	Supplied at 1.0mg/mL in phosphate buffered saline (without Mg <sup>2+</sup> and Ca <sup>2+</sup> ), pH 7.4, 150mM NaCl, 0.02% sodium azide and 50% glycerol.
Storage	Store at -20°C for long term preservation (recommended). Store at 4°C for short term use.

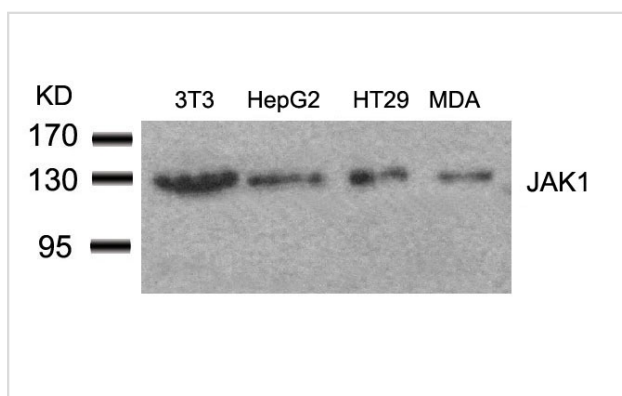
## Application Details

Predicted MW: 130kd

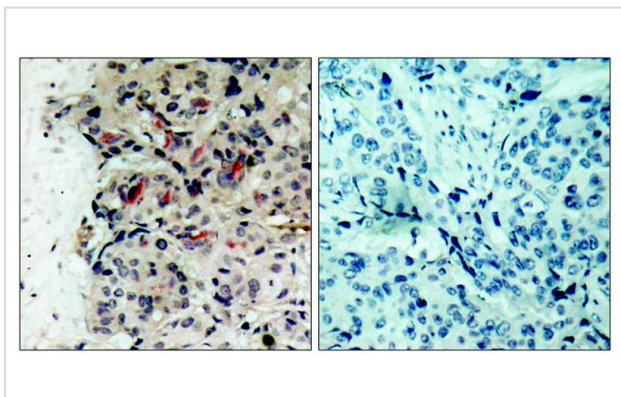
Western blotting: 1:500~1:1000

Immunohistochemistry: 1:50~1:100

## Images



Western blot analysis of extracts from 3T3, HepG2, HT29 and MDA cells using JAK1(Ab-1022) Antibody #21119.



Immunohistochemical analysis of paraffin-embedded human breast carcinoma tissue using JAK1(Ab-1022) Antibody #21119(left) or the same antibody preincubated with blocking peptide(right).

## Background

Tyrosine kinase of the non-receptor type, involved in the IFN- $\alpha$ /beta/gamma signal pathway. Kinase partner for the interleukin (IL)-2 receptor.

Zheng H, et al. (2005) *Mol Cell Proteomics*. 4(6):721-730.

Wang R, et al. (2003) *Arch Biochem Biophys*. 410(1): 7-15.

Note: This product is for in vitro research use only