

## KLK7 Antibody

Catalog No: #31093

Package Size: #31093-1 50ul #31093-2 100ul

Orders: order@signalwayantibody.com

Support: tech@signalwayantibody.com

## Description

Product Name	KLK7 Antibody
Host Species	Rabbit
Clonality	Polyclonal
Applications	ELISA WB IHC
Species Reactivity	Hu Ms
Specificity	The antibody detects endogenous level of total KLK7 protein.
Immunogen Type	Recombinant Protein
Immunogen Description	Fusion protein corresponding to a region derived from 30-253 amino acids of human kallikrein-related peptidase 7kallikrein-related peptidase 7
Target Name	KLK7
Other Names	kallikrein-related peptidase 7, hK7, SCCE, PRSS6
Accession No.	Swiss-Prot:P49862Gene ID:5650;
Uniprot	P49862
GeneID	5650;
Concentration	0.5mg/ml
Formulation	Rabbit IgG in pH7.4 PBS, 0.05% NaN <sub>3</sub> , 40% Glycerol.
Storage	Store at -20°C/1 year

## Application Details

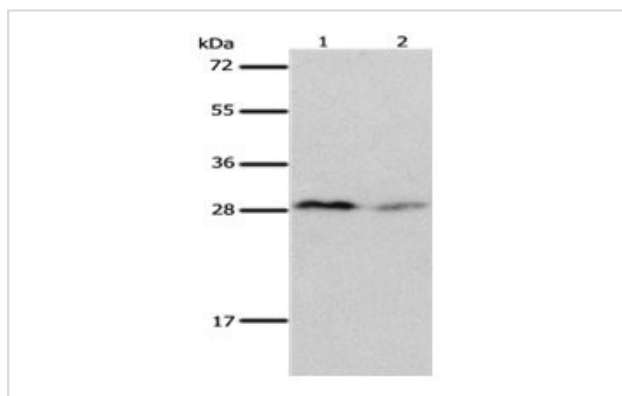
Predicted MW: 28kd

ELISA: 1:2000-1:5000

Western blotting: 1:500-1:2000

Immunohistochemistry: 1:25-1:100

## Images



Gel: 12%SDS-PAGE

Lane1: Mouse brain tissue lysate

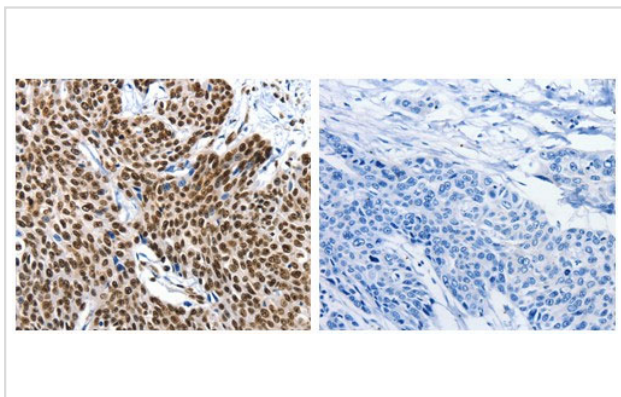
Lane2: Mouse kidney tissue lysate

Lysates: 40 ug per lane

Primary antibody: 1/600dilution

Secondary antibody: Goat anti Rabbit IgG - H&amp;L (HRP) at 1/10000 dilution

Exposure time: 20 seconds



The image on the left is immunohistochemistry of paraffin-embedded human esophagus cancer tissue using 31093 (KLK7 Antibody) at dilution 1/10, on the right is treated with the fusion protein.

## Background

This gene encodes a member of the kallikrein subfamily of serine proteases. These enzymes have diverse physiological functions and many kallikrein genes are biomarkers for cancer. The encoded protein has chymotrypsin-like activity and plays a role in the proteolysis of intercellular cohesive structures that precedes desquamation, the shedding of the outermost layer of the epidermis. The encoded protein may play a role in cancer invasion and metastasis, and increased expression of this gene is associated with unfavorable prognosis and progression of several types of cancer.

Polymorphisms in this gene may play a role in the development of atopic dermatitis. Alternatively spliced transcript variants encoding multiple isoforms have been observed for this gene, which is one of fifteen kallikrein subfamily members located in a gene cluster on chromosome 19.

Note: This product is for in vitro research use only