

## Jak2(Ab-1007) Antibody

Catalog No: #21121

Package Size: #21121-1 50ul #21121-2 100ul

Orders: order@signalwayantibody.com

Support: tech@signalwayantibody.com

## Description

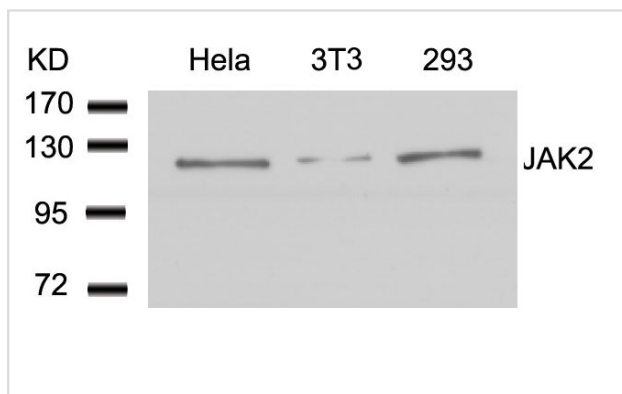
Product Name	Jak2(Ab-1007) Antibody
Host Species	Rabbit
Clonality	Polyclonal
Purification	Antibodies were produced by immunizing rabbits with synthetic peptide and KLH conjugates. Antibodies were purified by affinity-chromatography using epitope-specific peptide.
Applications	WB
Species Reactivity	Hu Ms Rt
Specificity	The antibody detects endogenous level of total JAK2 protein.
Immunogen Type	Peptide-KLH
Immunogen Description	Peptide sequence around aa. 1005~1009 (K-E-Y-Y-K) derived from Human JAK2.
Target Name	Jak2
Other Names	Janus kinase 2
Accession No.	Swiss-Prot: O60674NCBI Protein: NP_004963.1
Uniprot	O60674
GeneID	3717;
Concentration	1.0mg/ml
Formulation	Supplied at 1.0mg/mL in phosphate buffered saline (without Mg <sup>2+</sup> and Ca <sup>2+</sup> ), pH 7.4, 150mM NaCl, 0.02% sodium azide and 50% glycerol.
Storage	Store at -20°C for long term preservation (recommended). Store at 4°C for short term use.

## Application Details

Predicted MW: 125kd

Western blotting: 1:500~1:1000

## Images



Western blot analysis of extracts from HeLa, 3T6 and 293 cells using JAK2 (Ab-1007) Antibody #21121.

## Background

---

Plays a role in leptin signaling and control of body weight.

---

Note: This product is for in vitro research use only