

MMP15 Antibody

Catalog No: #31100

Package Size: #31100-1 50ul #31100-2 100ul

Orders: order@signalwayantibody.com

Support: tech@signalwayantibody.com

Description

Product Name	MMP15 Antibody
Host Species	Rabbit
Clonality	Polyclonal
Applications	ELISA WB
Species Reactivity	Hu Ms
Specificity	The antibody detects endogenous level of total MMP15 protein.
Immunogen Type	Recombinant protein
Immunogen Description	Fusion protein corresponding to C terminal 300 amino acids of human matrix metalloproteinase 15 (membrane-inserted)matrix metalloproteinase 15 (membrane-inserted)
Target Name	MMP15
Other Names	matrix metalloproteinase 15 (membrane-inserted), MTMMP2, SMCP-2, MT2-MMP
Accession No.	Swiss-Prot:P51511Gene ID:4324;
Uniprot	P51511
GeneID	4324;
Formulation	Rabbit IgG in pH7.4 PBS, 0.05% NaN ₃ , 40% Glycerol.
Storage	Store at -20°C/1 year

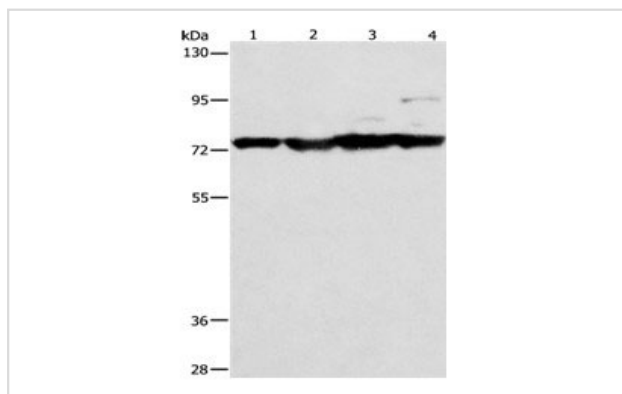
Application Details

Predicted MW: 76kd

ELISA: 1:2000-1:5000

Western blotting: 1:500-1:2000

Images



Gel: 8%SDS-PAGE

Lane1: Mouse stomach tissue lysate

Lane2: Mouse heart tissue lysate

Lane3: Mouse liver tissue lysate

Lane4: HT-29 cell lysate

Lysates: 40 ug per lane

Primary antibody: 1/200dilution

Secondary antibody: Goat anti Rabbit IgG - H&L (HRP) at 1/10000 dilution

Exposure time: 1 minute

Background

Proteins of the matrix metalloproteinase (MMP) family are involved in the breakdown of extracellular matrix in normal physiological processes, such as

embryonic development, reproduction, and tissue remodeling, as well as in disease processes, such as arthritis and metastasis. Most MMP's are secreted as inactive proproteins which are activated when cleaved by extracellular proteinases. However, the protein encoded by this gene is a member of the membrane-type MMP (MT-MMP) subfamily; each member of this subfamily contains a potential transmembrane domain suggesting that these proteins are expressed at the cell surface rather than secreted.

Note: This product is for in vitro research use only