

SPP1 Antibody

Catalog No: #31106

Package Size: #31106-1 50ul #31106-2 100ul

Orders: order@signalwayantibody.com

Support: tech@signalwayantibody.com

Description

Product Name	SPP1 Antibody
Host Species	Rabbit
Clonality	Polyclonal
Applications	ELISA WB
Species Reactivity	Hu Ms
Specificity	The antibody detects endogenous level of total SPP1 protein.
Immunogen Type	Recombinant protein
Immunogen Description	Fusion protein corresponding to a region derived from 17-300 amino acids of human secreted phosphoprotein 1
Target Name	SPP1
Other Names	secreted phosphoprotein 1, OPN, BNSP, BSPI, ETA-1
Accession No.	Swiss-Prot:P10451 Gene ID:6696;
Uniprot	P10451
GeneID	6696;
Formulation	Rabbit IgG in pH7.4 PBS, 0.05% NaN ₃ , 40% Glycerol.
Storage	Store at -20°C/1 year

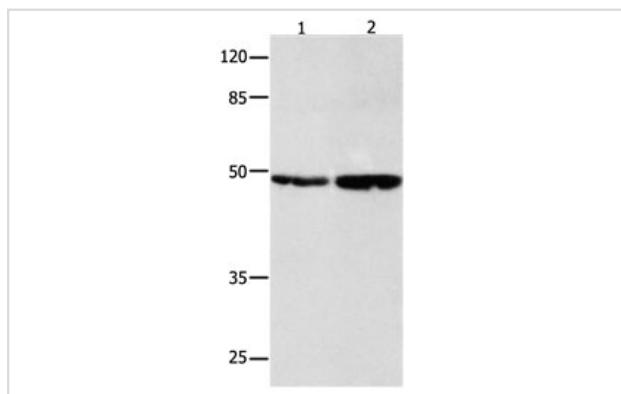
Application Details

Predicted MW: 34kd

ELISA: 1:2000-1:5000

Western blotting: 1:500-1:2000

Images



Gel: 10%SDS-PAGE
 Lane1: 231 cell lysate
 Lane2: OP9 cell lysate
 Lysates: 40 ug per lane
 Primary antibody: 1/350 dilution
 Secondary antibody: Goat anti Rabbit IgG - H&L (HRP) at 1/10000 dilution
 Exposure time: 2 minutes

Background

The protein encoded by this gene is involved in the attachment of osteoclasts to the mineralized bone matrix. The encoded protein is secreted and

binds hydroxyapatite with high affinity. The osteoclast vitronectin receptor is found in the cell membrane and may be involved in the binding to this protein. This protein is also a cytokine that upregulates expression of interferon-gamma and interleukin-12. Several transcript variants encoding different isoforms have been found for this gene.

Note: This product is for in vitro research use only