

PARK7 Antibody

Catalog No: #31108

Package Size: #31108-1 50ul #31108-2 100ul

Orders: order@signalwayantibody.comSupport: tech@signalwayantibody.com

Description

Product Name	PARK7 Antibody
Host Species	Rabbit
Clonality	Polyclonal
Applications	ELISA WB IHC
Species Reactivity	Hu
Specificity	The antibody detects endogenous level of total PARK7 protein.
Immunogen Type	Recombinant Protein
Immunogen Description	Full length fusion protein
Target Name	PARK7
Other Names	parkinson protein 7, DJ1, DJ-1
Accession No.	Swiss-Prot:Q99497Gene ID:11315;
Uniprot	Q99497
GeneID	11315;
Formulation	Rabbit IgG in pH7.4 PBS, 0.05% NaN ₃ , 40% Glycerol.
Storage	Store at -20°C/1 year

Application Details

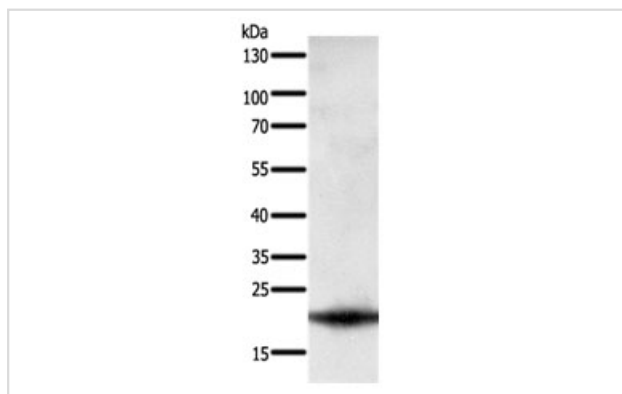
Predicted MW: 20kd

ELISA: 1:1000-1:5000

Western blotting: 1:200-1:1000

Immunohistochemistry: 1:50-1:200

Images



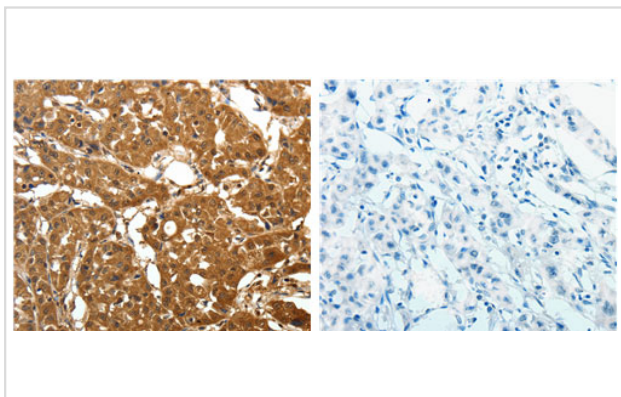
Gel: 8%+10% SDS-PAGE

Lysate: 60 µg Hela cell lysate

Primary antibody: 1/300dilution

Secondary antibody: Goat anti Rabbit IgG - H&L (HRP) at 1/10000 dilution

Exposure time: 2 minutes



The image on the left is immunohistochemistry of paraffin-embedded human lung cancer tissue using 31108 (PARK7 Antibody) at dilution 1/25, on the right is treated with the fusion protein.

Background

The product of this gene belongs to the peptidase C56 family of proteins. It acts as a positive regulator of androgen receptor-dependent transcription. It may also function as a redox-sensitive chaperone, as a sensor for oxidative stress, and it apparently protects neurons against oxidative stress and cell death. Defects in this gene are the cause of autosomal recessive early-onset Parkinson disease 7. Two transcript variants encoding the same protein have been identified for this gene.

Note: This product is for in vitro research use only