

## CDH23 Antibody

Catalog No: #31109

Package Size: #31109-1 50ul #31109-2 100ul

Orders: order@signalwayantibody.com

Support: tech@signalwayantibody.com

## Description

Product Name	CDH23 Antibody
Host Species	Rabbit
Clonality	Polyclonal
Applications	ELISA WB IHC
Species Reactivity	Hu Ms
Specificity	The antibody detects endogenous level of total CDH23 protein.
Immunogen Type	Recombinant Protein
Immunogen Description	Fusion protein corresponding to C terminal 250 amino acids of human cadherin-related 23cadherin-related 23
Target Name	CDH23
Other Names	cadherin-related 23, USH1D, CDHR23
Accession No.	Swiss-Prot:Q9H251Gene ID:64072;
Uniprot	Q9H251
GeneID	64072;
Formulation	Rabbit IgG in pH7.4 PBS, 0.05% NaN <sub>3</sub> , 40% Glycerol.
Storage	Store at -20°C/1 year

## Application Details

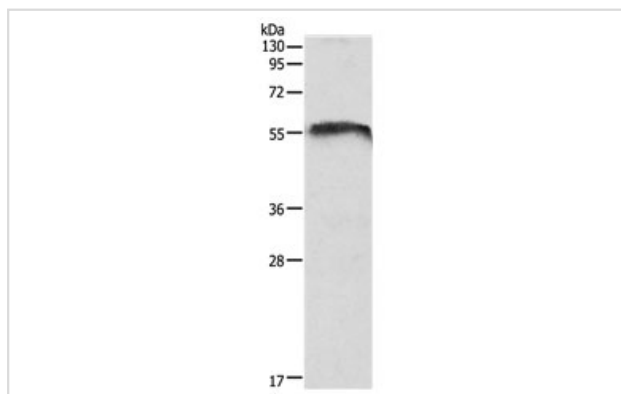
Predicted MW: 45kd

ELISA: 1:2000-1:5000

Western blotting: 1:500-1:2000

Immunohistochemistry: 1:100-1:300

## Images



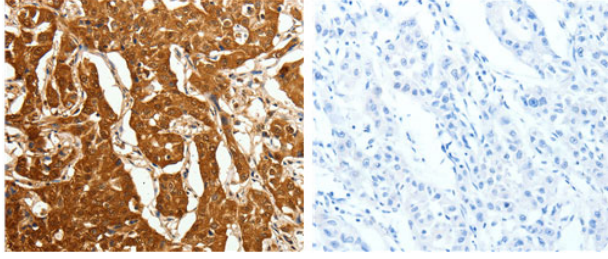
Gel: 10%SDS-PAGE

Lysate: 40 µg Mouse brain tissue lysate

Primary antibody: 1/1050 dilution

Secondary antibody: Goat anti Rabbit IgG - H&amp;L (HRP) at 1/10000 dilution

Exposure time: 20 seconds



The image on the left is immunohistochemistry of paraffin-embedded human lung cancer tissue using 31109 (CDH23 Antibody) at dilution 1/80, on the right is treated with the fusion protein.

## Background

This gene is a member of the cadherin superfamily, whose genes encode calcium dependent cell-cell adhesion glycoproteins. The encoded protein is thought to be involved in stereocilia organization and hair bundle formation. The gene is located in a region containing the human deafness loci DFNB12 and USH1D. Usher syndrome 1D and nonsyndromic autosomal recessive deafness DFNB12 are caused by allelic mutations of this cadherin-like gene. Alternative splice variants encoding different isoforms have been described.

Note: This product is for in vitro research use only