

## PSMD14 Antibody

Catalog No: #31120

Package Size: #31120-1 50ul #31120-2 100ul

Orders: order@signalwayantibody.com

Support: tech@signalwayantibody.com

## Description

Product Name	PSMD14 Antibody
Host Species	Rabbit
Clonality	Polyclonal
Applications	ELISA WB IHC
Species Reactivity	Hu Ms
Specificity	The antibody detects endogenous level of total PSMD14 protein.
Immunogen Type	Recombinant protein
Immunogen Description	Fusion protein corresponding to a region derived from 216-310 amino acids of human proteasome (prosome, macropain) 26S subunit, non-ATPase, 14
Target Name	PSMD14
Other Names	Proteasome (prosome, macropain) 26S subunit, non-ATPase, 14, PAD1; POH1; RPN11
Accession No.	Swiss-Prot:O00487Gene ID:10213;
Uniprot	O00487
GeneID	10213;
Formulation	Rabbit IgG in pH7.4 PBS, 0.05% NaN <sub>3</sub> , 40% Glycerol.
Storage	Store at -20°C/1 year

## Application Details

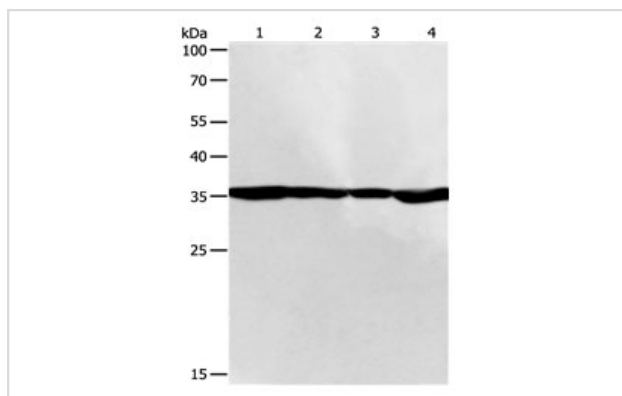
Predicted MW: 35kd

ELISA: 1:2000-1:5000

Western blotting: 1:500-1:2000

Immunohistochemistry: 1:25-1:100

## Images



Gel: 10%SDS-PAGE

Lane1: 293T cell lysate

Lane2: SKOV3 cell lysate

Lane3: NIH/3T3 cell lysate

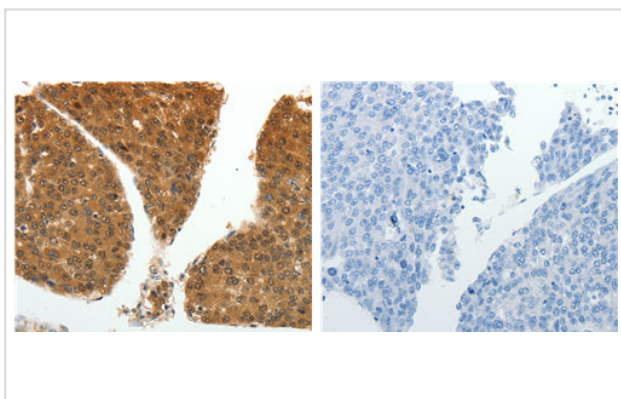
Lane4: 231 cell lysate

Lysates: 50 ug per lane

Primary antibody: 1/200 dilution

Secondary antibody: Goat anti Rabbit IgG - H&amp;L (HRP) at 1/10000 dilution

Exposure time: 1 minute



The image on the left is immunohistochemistry of paraffin-embedded human liver cancer tissue using 31120(PSMD14 Antibody) at dilution 1/20, on the right is treated with the fusion protein.

## Background

This gene encodes a component of the 26S proteasome. The 26S proteasome is a large multiprotein complex that catalyzes the degradation of ubiquitinated intracellular proteins. The encoded protein is a component of the 19S regulatory cap complex of the 26S proteasome and mediates substrate deubiquitination. A pseudogene of this gene is also located on the long arm of chromosome 2.

Note: This product is for in vitro research use only