

SIRT6 Antibody

Catalog No: #31124

Package Size: #31124-1 50ul #31124-2 100ul

Orders: order@signalwayantibody.com

Support: tech@signalwayantibody.com

Description

Product Name	SIRT6 Antibody
Host Species	Rabbit
Clonality	Polyclonal
Applications	ELISA WB
Species Reactivity	Hu Ms
Specificity	The antibody detects endogenous level of total SIRT6 protein.
Immunogen Type	Recombinant Protein
Immunogen Description	Fusion protein corresponding to a region derived from 35-274 amino acids of human sirtuin 6
Target Name	SIRT6
Other Names	Sirtuin 6, SIR2L6
Accession No.	Swiss-Prot:Q8N6T7Gene ID:51548;
Uniprot	Q8N6T7
GeneID	51548;
Formulation	Rabbit IgG in pH7.4 PBS, 0.05% NaN ₃ , 40% Glycerol.
Storage	Store at -20°C/1 year

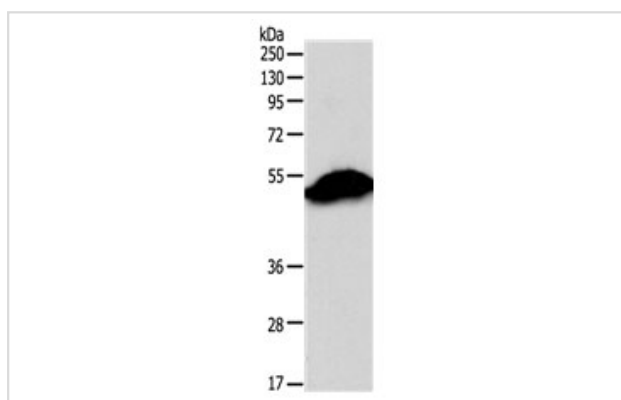
Application Details

Predicted MW: 39kd

ELISA: 1:2000-1:5000

Western blotting: 1:500-1:2000

Images



Gel: 10%SDS-PAGE

Lysate: 40 µg Mouse stomach tissue lysate

Primary antibody: 1/300 dilution

Secondary antibody: Goat anti Rabbit IgG - H&L (HRP) at 1/10000 dilution

Exposure time: 5 seconds

Background

This gene encodes a member of the sirtuin family of proteins, homologs to the yeast Sir2 protein. Members of the sirtuin family are characterized by a sirtuin core domain and grouped into four classes. The functions of human sirtuins have not yet been determined; however, yeast sirtuin proteins are

known to regulate epigenetic gene silencing and suppress recombination of rDNA. Studies suggest that the human sirtuins may function as intracellular regulatory proteins with mono-ADP-ribosyltransferase activity. The protein encoded by this gene is included in class IV of the sirtuin family. Alternative splicing results in multiple transcript variants.

Note: This product is for in vitro research use only