

## SOX7 Antibody

Catalog No: #31129

Package Size: #31129-1 50ul #31129-2 100ul

Orders: order@signalwayantibody.com

Support: tech@signalwayantibody.com

## Description

|                       |   |
|-----------------------|---|
| Product Name          | SOX7 Antibody   |
| Host Species          | Rabbit  |
| Clonality             | Polyclonal  |
| Applications          | ELISA WB  |
| Species Reactivity    | Hu  |
| Specificity           | The antibody detects endogenous level of total SOX7 protein.  |
| Immunogen Type        | Recombinant Protein   |
| Immunogen Description | Fusion protein corresponding to a region derived from 268-388 amino acids of human SRY (sex determining region Y)-box 7 |
| Target Name           | SOX7  |
| Other Names           | SRY (sex determining region Y)-box 7  |
| Accession No.         | Swiss-Prot:Q9BT81Gene ID:83595;   |
| Uniprot               | Q9BT81  |
| GeneID                | 83595;  |
| Formulation           | Rabbit IgG in pH7.4 PBS, 0.05% NaN <sub>3</sub> , 40% Glycerol.   |
| Storage               | Store at -20°C/1 year   |

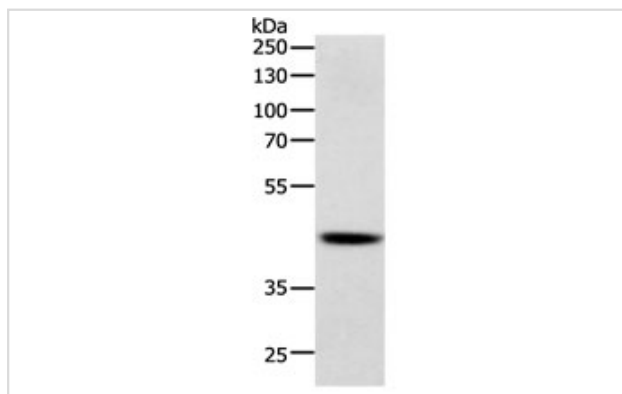
## Application Details

Predicted MW: 42kd

ELISA: 1:2000-1:5000

Western blotting: 1:500-1:2000

## Images



Gel: 10%SDS-PAGE

Lysate: 40 µg Human lymphoma tissue lysate

Primary antibody: 1/750 dilution

Secondary antibody: Goat anti Rabbit IgG - H&amp;L (HRP) at 1/10000 dilution

Exposure time: 30 seconds

## Background

This gene encodes a member of the SOX (SRY-related HMG-box) family of transcription factors involved in the regulation of embryonic development

and in the determination of the cell fate. The encoded protein may act as a transcriptional regulator after forming a protein complex with other proteins. The protein may play a role in tumorigenesis. A similar protein in mice is involved in the regulation of the wingless-type MMTV integration site family (Wnt) pathway.

---

Note: This product is for in vitro research use only