

ACE1 Antibody

Catalog No: #31140

Package Size: #31140-1 50ul #31140-2 100ul

Orders: order@signalwayantibody.com

Support: tech@signalwayantibody.com

Description

Product Name	ACE1 Antibody
Host Species	Rabbit
Clonality	Polyclonal
Applications	ELISA WB
Species Reactivity	Hu Ms
Specificity	The antibody detects endogenous level of total ACE1 protein.
Immunogen Type	Peptide-KLH
Immunogen Description	Synthetic peptide corresponding to a region derived from 78-92 amino acids of Human Angiotensin-converting enzyme
Target Name	ACE1
Other Names	Angiotensin-converting enzyme, DCP, ICH, ACE1, DCP1, CD143, MVCD3
Accession No.	Swiss-Prot:P12821 Gene ID:1636;
Uniprot	P12821
GeneID	1636;
Concentration	1.8mg/ml
Formulation	Rabbit IgG in pH7.4 PBS, 0.05% NaN ₃ , 40% Glycerol.
Storage	Store at -20°C/1 year

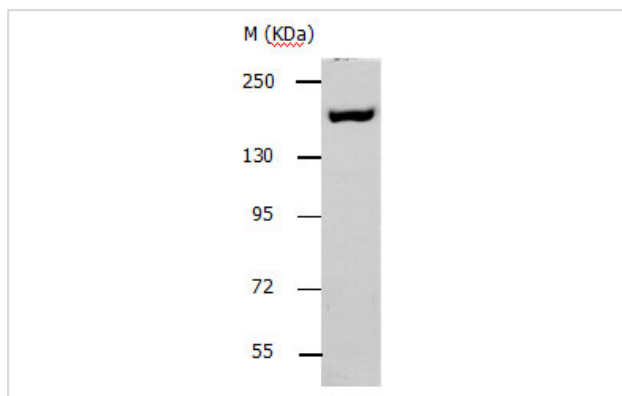
Application Details

Predicted MW: 150kd

ELISA: 1:2000-1:10000

Western blotting: 1:1000-1:5000

Images



Gel: 6%SDS-PAGE

Lysate: 40 µg Mouse kidney tissue lysate

Primary antibody: 1/1000 dilution

Secondary antibody: Donkey anti Rabbit IgG - H&L (HRP) at 1/3000 dilution

Exposure time: 30 seconds

Background

This gene encodes an enzyme involved in catalyzing the conversion of angiotensin I into a physiologically active peptide angiotensin II. Angiotensin II is a potent vasopressor and aldosterone-stimulating peptide that controls blood pressure and fluid-electrolyte balance. This enzyme plays a key role in the renin-angiotensin system. Many studies have associated the presence or absence of a 287 bp Alu repeat element in this gene with the levels of circulating enzyme or cardiovascular pathophysiologies. Multiple alternatively spliced transcript variants encoding different isoforms have been identified, and two most abundant spliced variants encode the somatic form and the testicular form, respectively, that are equally active.

Note: This product is for in vitro research use only