

## ARF6 Antibody

Catalog No: #31146

Package Size: #31146-1 50ul #31146-2 100ul

Orders: order@signalwayantibody.com

Support: tech@signalwayantibody.com

## Description

Product Name	ARF6 Antibody
Host Species	Rabbit
Clonality	Polyclonal
Applications	ELISA WB IHC
Species Reactivity	Hu Ms Rt
Specificity	The antibody detects endogenous level of total ARF6 protein.
Immunogen Type	Peptide
Immunogen Description	Synthetic peptide corresponding to a region derived from 162-175 amino acids of Human ADP-ribosylation factor 6
Target Name	ARF6
Other Names	ADP-ribosylation factor 6
Accession No.	Swiss-Prot:P62330Gene ID:382;
Uniprot	P62330
GeneID	382;
Formulation	Rabbit IgG in pH7.4 PBS, 0.05% NaN <sub>3</sub> , 40% Glycerol.
Storage	Store at -20°C/1 year

## Application Details

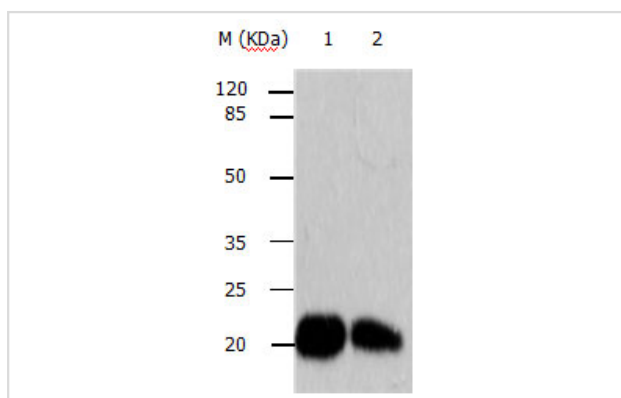
Predicted MW: 20kd

ELISA: 1:2000-1:10000

Western blotting: 1:500-1:2000

Immunohistochemistry: 1:10-1:50

## Images



Gel: 12%SDS-PAGE

Lane1: HepG2 cell lysate

Lane2: 231 cell lysate

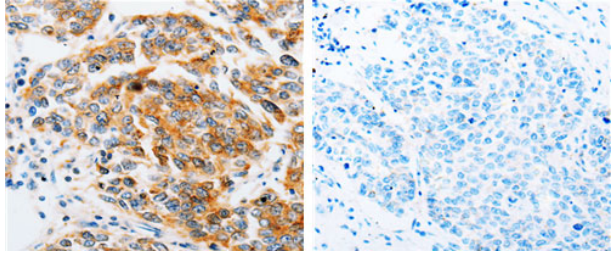
Lysates: 40 ug per lane

Primary antibody: 1/250 dilution

Secondary antibody: Donkey anti Rabbit IgG - H&amp;L (HRP) at

1/3000 dilution

Exposure time: 1 minute



The image on the left is immunohistochemistry of paraffin-embedded Human breast cancer tissue using 31146(ARF6 Antibody) at dilution 1/15, on the right is treated with the synthetic peptide.

## Background

This gene encodes a member of the human ARF gene family, which is part of the RAS superfamily. The ARF genes encode small guanine nucleotide-binding proteins that stimulate the ADP-ribosyltransferase activity of cholera toxin and play a role in vesicular trafficking and as activators of phospholipase D. The product of this gene is localized to the plasma membrane, and regulates vesicular trafficking, remodelling of membrane lipids, and signaling pathways that lead to actin remodeling. A pseudogene of this gene is located on chromosome 7.

Note: This product is for in vitro research use only