

RAB3c Antibody

Catalog No: #31148

Package Size: #31148-1 50ul #31148-2 100ul

Orders: order@signalwayantibody.com

Support: tech@signalwayantibody.com

Description

Product Name	RAB3c Antibody
Host Species	Rabbit
Clonality	Polyclonal
Applications	ELISA WB IHC
Species Reactivity	Hu Ms
Specificity	The antibody detects endogenous level of total RAB3c protein.
Immunogen Type	Peptide
Immunogen Description	Synthetic peptide corresponding to a region derived from 202-216 amino acids of Human Ras-related protein Rab-3C
Target Name	RAB3c
Other Names	Ras-related protein Rab-3C
Accession No.	Swiss-Prot:Q96E17Gene ID:115827;
Uniprot	Q96E17
GeneID	115827;
Formulation	Rabbit IgG in pH7.4 PBS, 0.05% NaN ₃ , 40% Glycerol.
Storage	Store at -20°C/1 year

Application Details

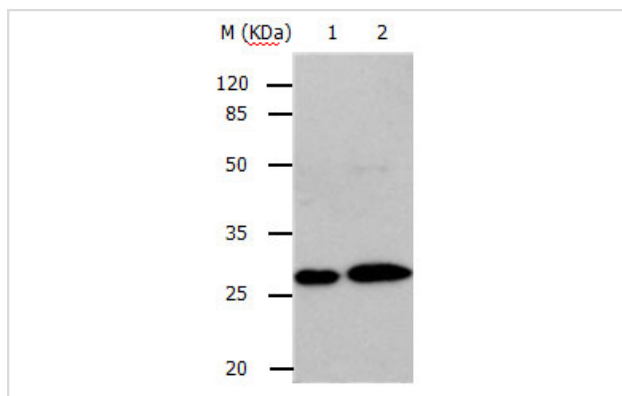
Predicted MW: 26kd

ELISA: 1:2000-1:10000

Western blotting: 1:500-1:2000

Immunohistochemistry: 1:10-1:50

Images



Gel: 10%SDS-PAGE

Lane1: Mouse lung tissue lysate

Lane2: 293T cell lysate

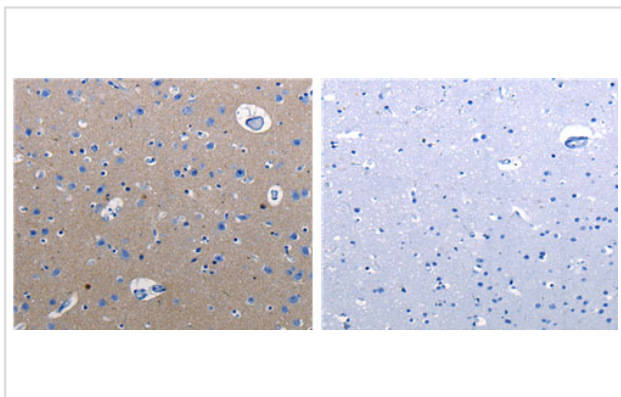
Lysates: 40 ug per lane

Primary antibody: 1/400 dilution

Secondary antibody: Donkey anti Rabbit IgG - H&L (HRP) at

1/3000 dilution

Exposure time: 1 minute



The image on the left is immunohistochemistry of paraffin-embedded Human urinary bladder tissue using 31148 (RAB3C Antibody) at dilution 1/10, on the right is treated with the synthetic peptide.

Background

Ras-related protein Rab-3C is a protein that in humans is encoded by the RAB3C gene. RAB proteins, such as RAB3C, are small GTPases implicated in the regulation of vesicular trafficking between membrane compartments. It is involved in protein transport and vesicular traffic probably.

Note: This product is for in vitro research use only