

## RALB Antibody

Catalog No: #31152

Package Size: #31152-1 50ul #31152-2 100ul

Orders: order@signalwayantibody.com

Support: tech@signalwayantibody.com

## Description

Product Name	RALB Antibody
Host Species	Rabbit
Clonality	Polyclonal
Applications	ELISA WB
Species Reactivity	Hu Ms
Specificity	The antibody detects endogenous level of total RALB protein.
Immunogen Type	Peptide-KLH
Immunogen Description	Synthetic peptide corresponding to a region derived from 142-156 amino acids of Human Ras-related protein Ral-B
Target Name	RALB
Other Names	Ras-related protein Ral-B
Accession No.	Swiss-Prot:P11234Gene ID:5899;
Uniprot	P11234
GeneID	5899;
Formulation	Rabbit IgG in pH7.4 PBS, 0.05% NaN <sub>3</sub> , 40% Glycerol.
Storage	Store at -20°C/1 year

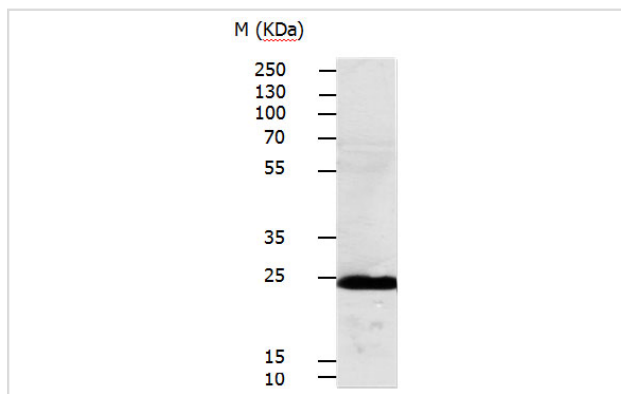
## Application Details

Predicted MW: 24kd

ELISA: 1:500-1:5000

Western blotting: 1:500-1:2000

## Images



Gel: 10%SDS-PAGE

Lysate: 30 µg Mouse lung tissue lysate

Primary antibody: 1/250 dilution

Secondary antibody: Goat anti Rabbit IgG - H&amp;L (HRP) at 1/3000 dilution

Exposure time: 30 seconds

## Background

This gene encodes a GTP-binding protein that belongs to the small GTPase superfamily and Ras family of proteins. GTP-binding proteins mediate the

transmembrane signaling initiated by the occupancy of certain cell surface receptors.

---

Note: This product is for in vitro research use only