

## RAB6A Antibody

Catalog No: #31154

Package Size: #31154-1 50ul #31154-2 100ul

Orders: order@signalwayantibody.com

Support: tech@signalwayantibody.com

## Description

Product Name	RAB6A Antibody
Host Species	Rabbit
Clonality	Polyclonal
Applications	ELISA WB IHC
Species Reactivity	Hu Ms Rt
Specificity	The antibody detects endogenous level of total RAB6A protein.
Immunogen Type	Peptide
Immunogen Description	Synthetic peptide corresponding to a region derived from 125-139 amino acids of Human Ras-related protein Rab-6A
Target Name	RAB6A
Other Names	Ras-related protein Rab-6A , RAB6
Accession No.	Swiss-Prot:P20340Gene ID:5870;
Uniprot	P20340
GeneID	5870;
Formulation	Rabbit IgG in pH7.4 PBS, 0.05% NaN <sub>3</sub> , 40% Glycerol.
Storage	Store at -20°C/1 year

## Application Details

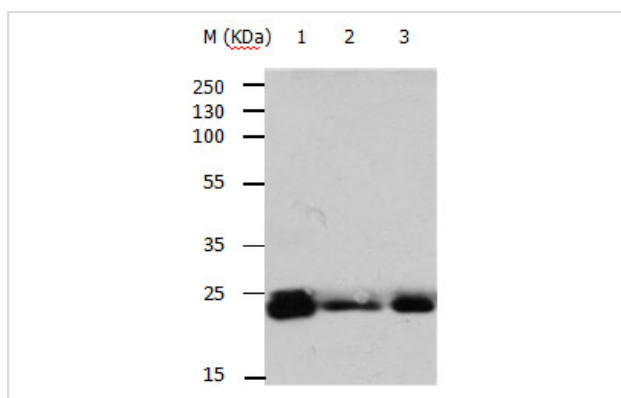
Predicted MW: 24kd

ELISA: 1:2000-1:10000

Western blotting: 1:500-1:2000

Immunohistochemistry: 1:25-1:100

## Images



Gel: 10%SDS-PAGE

Lane1: Mouse brain tissue lysate

Lane2: NIH/3T3 cell lysate

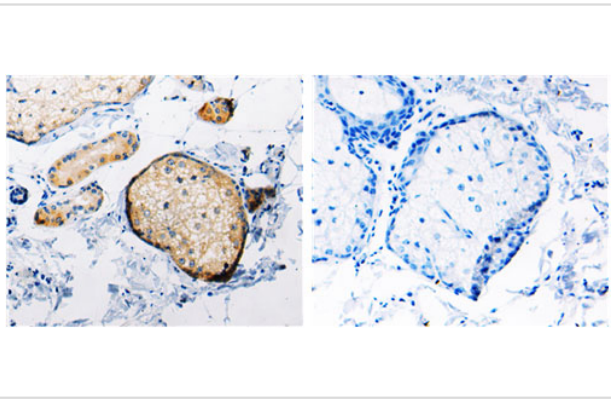
Lane3: HT-29 cell lysate

Lysates: 30ug per lane

Primary antibody: 1/650 dilution

Secondary antibody: Donkey anti Rabbit IgG - H&amp;L (HRP) at 1/3000 dilution

Exposure time: 1 minute



The image on the left is immunohistochemistry of paraffin-embedded Human skin tissue using 31154(RAB6A Antibody) at dilution 1/25, on the right is treated with the synthetic peptide.

## Background

This gene encodes a member of the RAB family, which belongs to the small GTPase superfamily. GTPases of the RAB family bind to various effectors to regulate the targeting and fusion of transport carriers to acceptor compartments. This protein is located at the Golgi apparatus, which regulates trafficking in both a retrograde (from early endosomes and Golgi to the endoplasmic reticulum) and an anterograde (from the Golgi to the plasma membrane) directions. Myosin II is an effector of this protein in these processes. This protein is also involved in assembly of human cytomegalovirus (HCMV) by interacting with the cellular protein Bicaudal D1, which interacts with the HCMV virion tegument protein, pp150. Multiple alternatively spliced transcript variants encoding different isoforms have been identified.

Note: This product is for in vitro research use only