

AVEN Antibody

Catalog No: #31160

Package Size: #31160-1 50ul #31160-2 100ul

Orders: order@signalwayantibody.com

Support: tech@signalwayantibody.com

Description

Product Name	AVEN Antibody
Host Species	Rabbit
Clonality	Polyclonal
Applications	ELISA WB
Species Reactivity	Hu Ms
Specificity	The antibody detects endogenous level of total AVEN protein.
Immunogen Type	Peptide-KLH
Immunogen Description	Synthetic peptide corresponding to a region derived from 339-353 amino acids of Human Apoptosis, caspase activation inhibitor
Target Name	AVEN
Other Names	Apoptosis, caspase activation inhibitor, PDCD12
Accession No.	Swiss-Prot:Q9NQS1 Gene ID:57099;
Uniprot	Q9NQS1
GeneID	57099;
Formulation	Rabbit IgG in pH7.4 PBS, 0.05% NaN ₃ , 40% Glycerol.
Storage	Store at -20°C/1 year

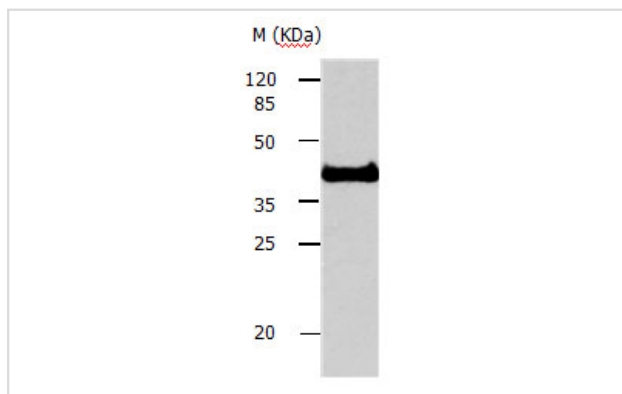
Application Details

Predicted MW: 39kd

ELISA: 1:500-1:5000

Western blotting: 1:500-1:1000

Images



Gel: 10%SDS-PAGE

Lysate: 40 µg Jurkat cell lysate

Primary antibody: 1/400 dilution

Secondary antibody: Donkey anti Rabbit IgG - H&L (HRP) at 1/5000 dilution

Exposure time: 50 seconds

Background

Aven binds to both Bcl-x(L) and the caspase regulator Apaf-1, which can supported that Bcl-x(L) inhibits cell death at a late (postmitochondrial) step in

the death pathway. Identified in a yeast two-hybrid screen, Aven inhibited the proteolytic activation of caspases in a cell-free extract and suppressed apoptosis induced by Apaf-1 plus caspase-9. Expressing highly in the testis, ovary, and thymus .

Note: This product is for in vitro research use only