

## BBC3 Antibody

Catalog No: #31161

Package Size: #31161-1 50ul #31161-2 100ul

Orders: order@signalwayantibody.com

Support: tech@signalwayantibody.com

## Description

Product Name	BBC3 Antibody
Host Species	Rabbit
Clonality	Polyclonal
Applications	ELISA WB
Species Reactivity	Hu Ms
Specificity	The antibody detects endogenous level of total BBC3 protein.
Immunogen Type	Peptide
Immunogen Description	Synthetic peptide corresponding to a region derived from 180-193 amino acids of Human Bcl-2-binding component 3
Target Name	BBC3
Other Names	Bcl-2-binding component 3, JFY1, PUMA, JFY-1
Accession No.	Swiss-Prot:Q9BXH1
Uniprot	Q9BXH1
Formulation	Rabbit IgG in pH7.4 PBS, 0.05% NaN <sub>3</sub> , 40% Glycerol.
Storage	Store at -20°C/1 year

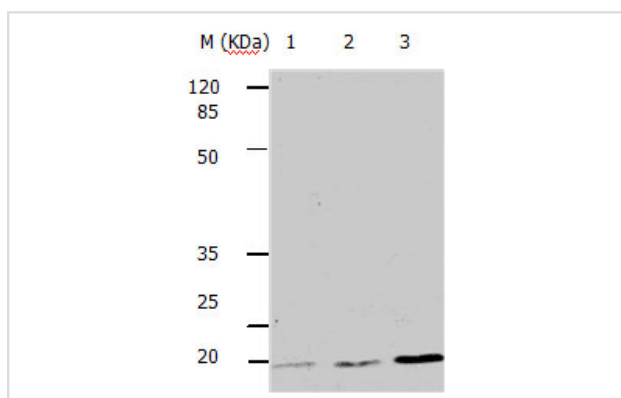
## Application Details

Predicted MW: 21kd

ELISA: 1:1000-1:5000

Western blotting: 1:500-1:2000

## Images



Gel: 8+10%SDS-PAGE  
 Lane1: NIH/3T3 cell lysate  
 Lane2: A549 cell lysate  
 Lane3: HeLa cell lysate  
 Lysates: 30ug per lane  
 Primary antibody: 1/540 dilution  
 Secondary antibody: Donkey anti Rabbit IgG - H&L (HRP) at 1/5000 dilution  
 Exposure time: 1 minute

## Background

This gene encodes a member of the BCL-2 family of proteins. This family member belongs to the BH3-only pro-apoptotic subclass. The protein cooperates with direct activator proteins to induce mitochondrial outer membrane permeabilization and apoptosis. It can bind to anti-apoptotic Bcl-2

family members to induce mitochondrial dysfunction and caspase activation. Because of its pro-apoptotic role, this gene is a potential drug target for cancer therapy and for tissue injury. Alternative splicing results in multiple transcript variants.

---

Note: This product is for in vitro research use only