

CTNNB1 Antibody

Catalog No: #31164

Package Size: #31164-1 50ul #31164-2 100ul

Orders: order@signalwayantibody.com

Support: tech@signalwayantibody.com

Description

| | |
|-----------------------|--|
| Product Name | CTNNB1 Antibody |
| Host Species | Rabbit |
| Clonality | Polyclonal |
| Applications | ELISA WB |
| Species Reactivity | Hu Ms Rt |
| Specificity | The antibody detects endogenous level of total CTNNB1 protein. |
| Immunogen Type | Peptide |
| Immunogen Description | Synthetic peptide corresponding to a region derived from 757-770 amino acids of Human Catenin beta-1 |
| Target Name | CTNNB1 |
| Other Names | Catenin beta-1 |
| Accession No. | Swiss-Prot:P35222Gene ID:1499; |
| Uniprot | P35222 |
| GeneID | 1499; |
| Formulation | Rabbit IgG in pH7.4 PBS, 0.05% NaN ₃ , 40% Glycerol. |
| Storage | Store at -20°C/1 year |

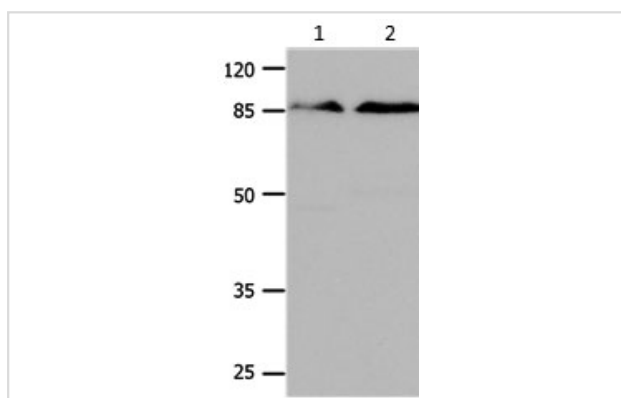
Application Details

Predicted MW: 86kd

ELISA: 1:500-1:5000

Western blotting: 1:500-1:2000

Images



Gel: 10%SDS-PAGE

Lane1: Mouse brain tissue lysate

Lane2: Mouse lung tissue lysate

Lysates: 24 ug per lane

Primary antibody: 1/350 dilution

Secondary antibody: Donkey anti Rabbit IgG - H&L (HRP) at 1/5000 dilution

Exposure time: 1 minute

Background

The protein encoded by this gene is part of a complex of proteins that constitute adherens junctions (AJs). AJs are necessary for the creation and maintenance of epithelial cell layers by regulating cell growth and adhesion between cells. The encoded protein also anchors the actin cytoskeleton

and may be responsible for transmitting the contact inhibition signal that causes cells to stop dividing once the epithelial sheet is complete. Finally, this protein binds to the product of the APC gene, which is mutated in adenomatous polyposis of the colon. Mutations in this gene are a cause of colorectal cancer (CRC), pilomatixoma (PTR), medulloblastoma (MDB), and ovarian cancer. Three transcript variants encoding the same protein have been found for this gene.[]

Note: This product is for in vitro research use only