

CCL3L1 Antibody

Catalog No: #31166

Package Size: #31166-1 50ul #31166-2 100ul

Orders: order@signalwayantibody.com

Support: tech@signalwayantibody.com

Description

Product Name	CCL3L1 Antibody
Host Species	Rabbit
Clonality	Polyclonal
Applications	ELISA WB
Species Reactivity	Human
Specificity	The antibody detects endogenous level of CCL3L1 protein.
Immunogen Type	Peptide-KLH
Immunogen Description	Synthetic peptide of human CCL3L1
Target Name	CCL3L1
Other Names	chemokine (C-C motif) ligand 3-like 1, LD78, 464.2, MIP1AP, SCYA3L, G0S19-2, SCYA3L1, D17S1718, LD78BETA
Uniprot	P16619
Concentration	1mg/ml
Formulation	Rabbit IgG in pH7.4 PBS, 0.05% NaN ₃ , 40% Glycerol.
Storage	Store at -20°C/1 year

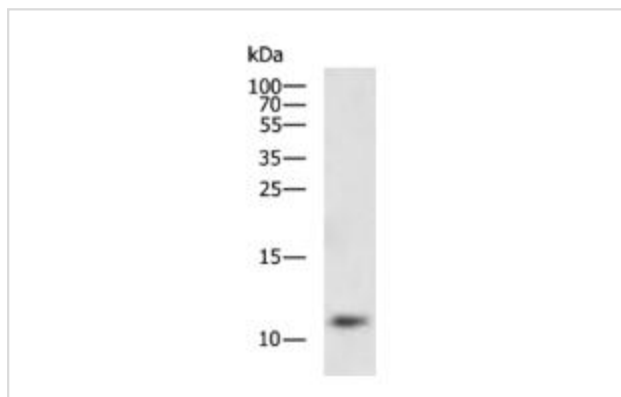
Application Details

Predicted MW: 10kd

ELISA: 1:2000-1:5000

Western blotting: 1:500-1:2000

Images



Gel: 12%SDS-PAGE
 Lysate: 40 ug
 Lane: THP-1 cell lysate
 Primary antibody: at dilution 1/1200
 Secondary antibody: at 1/5000 dilution
 Exposure time: 1 minute

Background

This gene is one of several cytokine genes clustered on the q-arm of chromosome 17. Cytokines are a family of secreted proteins involved in immunoregulatory and inflammatory processes. This protein binds to several chemokine receptors including chemokine binding protein 2 and

chemokine (C-C motif) receptor 5 (CCR5). CCR5 is a co-receptor for HIV, and binding of this protein to CCR5 inhibits HIV entry. The copy number of this gene varies among individuals; most individuals have 1-6 copies in the diploid genome, although rare individuals have zero or more than six copies. The human genome reference assembly contains two full copies of the gene (CCL3L3 and CCL3L1) and a partial pseudogene. This record represents the more telomeric full-length gene.

Note: This product is for in vitro research use only