

CCL17 Antibody

Catalog No: #31167



Orders: [order@signalwayantibody.com](mailto:order@signalwayantibody.com)  
Support: [tech@signalwayantibody.com](mailto:tech@signalwayantibody.com)

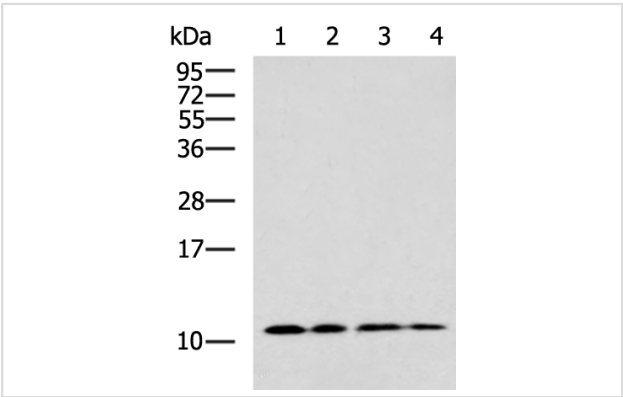
Description

Product Name	CCL17 Antibody
Host Species	Rabbit
Clonality	Polyclonal
Applications	ELISA WB IHC
Species Reactivity	Hu Ms
Specificity	The antibody detects endogenous level of total CCL17 protein.
Immunogen Type	Peptide
Immunogen Description	Synthetic peptide corresponding to a region derived from 73-86 amino acids of human chemokine (C-C motif) ligand 17
Target Name	CCL17
Other Names	chemokine (C-C motif) ligand 17, TARC, ABCD-2, SCYA17, A-152E5.3
Accession No.	Swiss-Prot:Q92583Gene ID:6361;
Uniprot	Q92583
GeneID	6361;
Concentration	1.3mg/ml
Formulation	Rabbit IgG in pH7.4 PBS, 0.05% NaN3, 40% Glycerol.
Storage	Store at -20°C/1 year

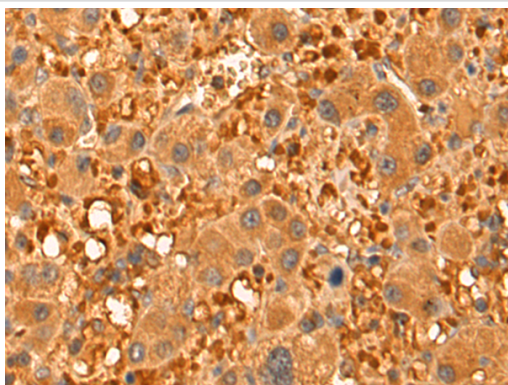
Application Details

Predicted MW: 11kd  
ELISA: 1:2000-1:5000  
Western blotting: 1:500-1:2000  
Immunohistochemistry: 1:50-1:200

Images



Gel: 12%SDS-PAGE  
Lysate: 40  $\mu$ g/Lane  
1-4: HepG2 cell, 293T cell, Human cerebrum tissue, Mouse kidney tissue lysates  
Primary antibody: CCL17 Antibody at dilution 1/700  
Secondary antibody: Goat anti rabbit IgG at 1/5000 dilution  
Exposure time: 15 seconds



The image is immunohistochemistry of paraffin-embedded Human liver cancer tissue using CCL17 Antibody at dilution 1/55. (Original magnification:  $\times 200$ )

## Background

This gene is one of several Cys-Cys (CC) cytokine genes clustered on the q arm of chromosome 16. Cytokines are a family of secreted proteins involved in immunoregulatory and inflammatory processes. The CC cytokines are proteins characterized by two adjacent cysteines. The cytokine encoded by this gene displays chemotactic activity for T lymphocytes, but not monocytes or granulocytes. The product of this gene binds to chemokine receptors CCR4 and CCR8. This chemokine plays important roles in T cell development in thymus as well as in trafficking and activation of mature T cells.

Note: This product is for in vitro research use only