

CSNK1A1 Antibody

Catalog No: #31170

Package Size: #31170-1 50ul #31170-2 100ul

Orders: order@signalwayantibody.com

Support: tech@signalwayantibody.com

Description

Product Name	CSNK1A1 Antibody
Host Species	Rabbit
Clonality	Polyclonal
Applications	ELISA WB
Species Reactivity	Hu Ms
Specificity	The antibody detects endogenous level of total CSNK1A1 protein.
Immunogen Type	Peptide-KLH
Immunogen Description	Synthetic peptide corresponding to a region derived from 316-329 amino acids of Human Casein kinase I isoform alpha
Target Name	CSNK1A1
Other Names	Casein kinase I isoform alpha, CK1, CK1a, CKIa, HLCDDP1, PRO2975, CK1alpha, CKIalpha
Formulation	Rabbit IgG in pH7.4 PBS, 0.05% NaN ₃ , 40% Glycerol.
Storage	Store at -20°C/1 year

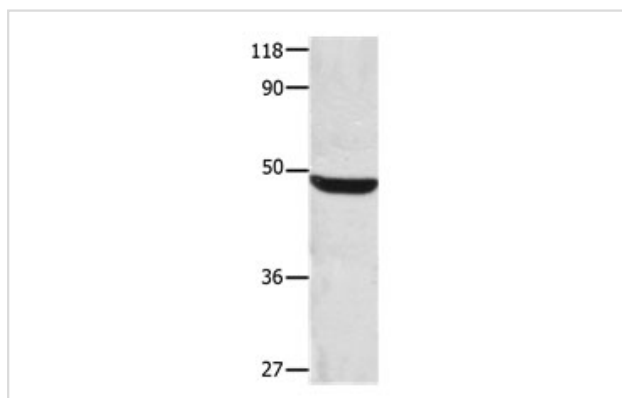
Application Details

Predicted MW: 42kd

ELISA: 1:1000-1:5000

Western blotting: 1:1000-1:5000

Images



Gel: 8%SDS-PAGE

Lysate: 30 µg Mouse brain tissue lysate

Primary antibody: 1/1200 dilution

Secondary antibody: Donkey anti Rabbit IgG - H&L (HRP) at

1/5000 dilution

Exposure time: 2 minutes

Background

Casein kinase, a ubiquitous, well-conserved protein kinase involved in cell metabolism and differentiation, is characterised by its preference for Serine or Threonine in acidic stretches of amino acids. The enzyme is a tetramer of 2 alpha- and 2 beta-subunits. The alpha-subunit is the catalytic unit and contains regions characteristic of serine/threonine protein kinases.

Note: This product is for in vitro research use only