

CSNK2B Antibody

Catalog No: #31171

Package Size: #31171-1 50ul #31171-2 100ul

Orders: order@signalwayantibody.com

Support: tech@signalwayantibody.com

Description

Product Name	CSNK2B Antibody
Host Species	Rabbit
Clonality	Polyclonal
Applications	ELISA WB IHC
Species Reactivity	Hu Ms Rt
Specificity	The antibody detects endogenous level of total CSNK2B protein.
Immunogen Type	Peptide-KLH
Immunogen Description	Synthetic peptide corresponding to a region derived from 201-215 amino acids of Human Casein kinase II subunit beta
Target Name	CSNK2B
Other Names	Casein kinase II subunit beta, G5A, CK2B, CK2N, CSK2B
Accession No.	Swiss-Prot:P67870Gene ID:1460;
Uniprot	P67870
GeneID	1460;
Formulation	Rabbit IgG in pH7.4 PBS, 0.05% NaN ₃ , 40% Glycerol.
Storage	Store at -20°C/1 year

Application Details

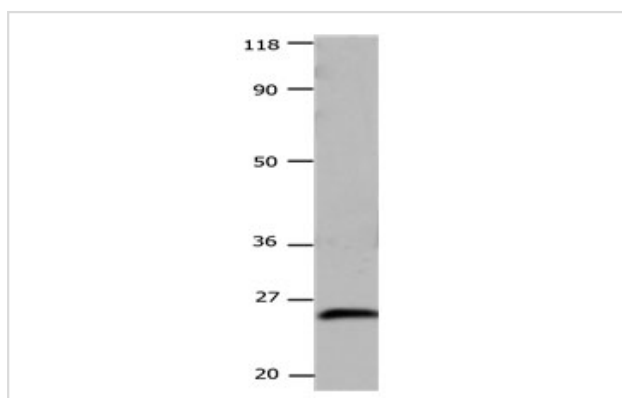
Predicted MW: 25kd

ELISA: 1:1000-1:5000

Western blotting: 1:1000-1:5000

Immunohistochemistry: 1:10-1:50

Images



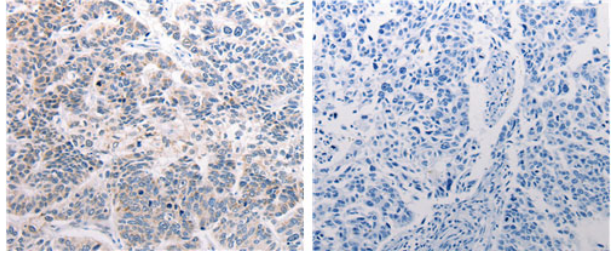
Gel: 10%SDS-PAGE

Lysate: 30 µg Hela cell lysate

Primary antibody: 1/1000 dilution

Secondary antibody: Donkey anti Rabbit IgG - H&L (HRP) at 1/5000 dilution

Exposure time: 30 seconds



The image on the left is immunohistochemistry of paraffin-embedded Human lung cancer tissue using 31171 (CSNK2B Antibody) at dilution 1/25, on the right is treated with the synthetic peptide.

Background

This gene encodes the beta subunit of casein kinase II, a ubiquitous protein kinase which regulates metabolic pathways, signal transduction, transcription, translation, and replication. The enzyme is composed of three subunits, alpha, alpha prime and beta, which form a tetrameric holoenzyme. The alpha and alpha prime subunits are catalytic, while the beta subunit serves regulatory functions. The enzyme localizes to the endoplasmic reticulum and the Golgi apparatus.

Note: This product is for in vitro research use only