

KRT16 Antibody

Catalog No: #31172

Package Size: #31172-1 50ul #31172-2 100ul

Orders: order@signalwayantibody.com

Support: tech@signalwayantibody.com

Description

Product Name	KRT16 Antibody
Host Species	Rabbit
Clonality	Polyclonal
Applications	ELISA WB IHC
Species Reactivity	Hu
Specificity	The antibody detects endogenous level of total KRT16 protein.
Immunogen Type	Peptide-KLH
Immunogen Description	Synthetic peptide corresponding to a region derived from 195-212 amino acids of Human Keratin, type I cytoskeletal 16
Target Name	KRT16
Other Names	Keratin, type I cytoskeletal 16, K16, CK16, K1CP, NEPPK, FNEPPK, KRT16A
Accession No.	Swiss-Prot:P08779Gene ID:3868;
Uniprot	P08779
GeneID	3868;
Concentration	0.3mg/ml
Formulation	Rabbit IgG in pH7.4 PBS, 0.05% NaN ₃ , 40% Glycerol.
Storage	Store at -20°C/1 year

Application Details

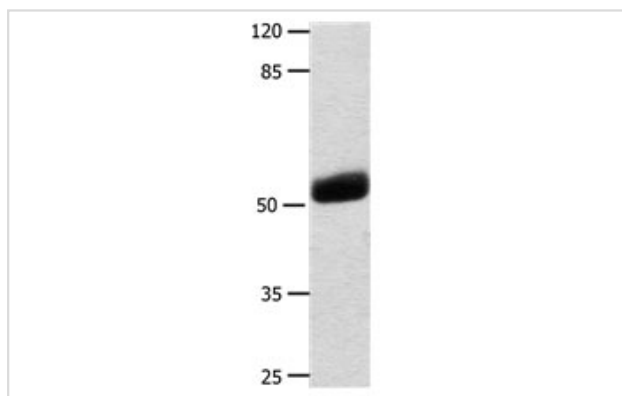
Predicted MW: 51kd

ELISA: 1:500-1:5000

Western blotting: 1:500-1:2000

Immunohistochemistry: 1:25-1:100

Images



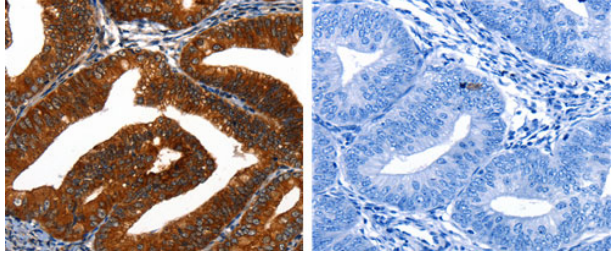
Gel: 10%SDS-PAGE

Lysate: 30 µg Human liver tissue lysate

Primary antibody: 1/500 dilution

Secondary antibody: Donkey anti Rabbit IgG - H&L (HRP) at 1/5000 dilution

Exposure time: 1 minute



The image on the left is immunohistochemistry of paraffin-embedded Human cervical cancer tissue using 31172(KRT16 Antibody) at dilution 1/25, on the right is treated with the synthetic peptide.

Background

The protein encoded by this gene is a member of the keratin gene family. The keratins are intermediate filament proteins responsible for the structural integrity of epithelial cells and are subdivided into cytokeratins and hair keratins. Most of the type I cytokeratins consist of acidic proteins which are arranged in pairs of heterotypic keratin chains and are clustered in a region of chromosome 17q12-q21. This keratin has been coexpressed with keratin 14 in a number of epithelial tissues, including esophagus, tongue, and hair follicles. Mutations in this gene are associated with type 1 pachyonychia congenita, non-epidermolytic palmoplantar keratoderma and unilateral palmoplantar verrucous nevus.

Note: This product is for in vitro research use only