

AQP10 Antibody

Catalog No: #31177

Package Size: #31177-1 50ul #31177-2 100ul

Orders: order@signalwayantibody.com

Support: tech@signalwayantibody.com

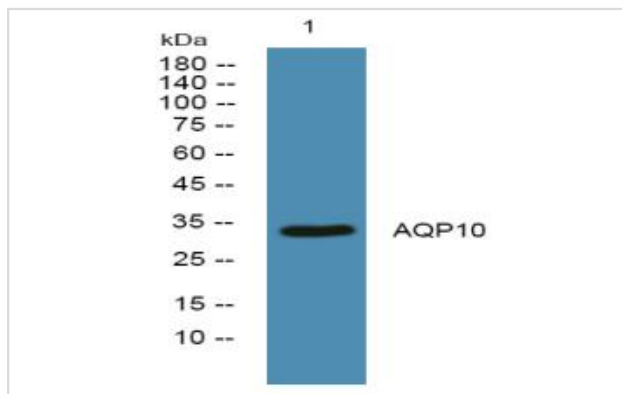
Description

Product Name	AQP10 Antibody
Host Species	Rabbit
Clonality	Polyclonal
Applications	ELISA WB
Species Reactivity	Hu,MsoO Rt
Specificity	AQP10 Polyclonal Antibody detects endogenous levels of protein
Immunogen Type	Peptide-KLH
Immunogen Description	Synthesized peptide derived from human protein
Target Name	AQP10
Other Names	aquaporin 10, AQPA_HUMAN
Accession No.	Swiss_Prot:Q96PS8Gene_ID:89872
Uniprot	Q96PS8
GeneID	89872
Concentration	1mg/ml
Formulation	Liquid in PBS containing 50% glycerol, and 0.02% sodium azide.
Storage	Store at -20°C/1 year

Application Details

WB 1:500-2000 ELISA 1:5000-20000

Images



Western blot analysis of lysates from K562 cells, primary antibody was diluted at 1:1000, 4° over night

Background

This gene encodes a member of the aquaglyceroporin family of integral membrane proteins. Members of this family function as water-permeable channels in the epithelia of organs that absorb and excrete water. This protein 1 / 2 was shown to function as a water-selective channel, and could also permeate neutral solutes such as glycerol and urea. [provided by RefSeq, Jul 2008],

Note: This product is for in vitro research use only