

CCNB1 Antibody

Catalog No: #31178

Package Size: #31178-1 50ul #31178-2 100ul

Orders: order@signalwayantibody.com

Support: tech@signalwayantibody.com

Description

Product Name	CCNB1 Antibody
Host Species	Rabbit
Clonality	Polyclonal
Applications	ELISA WB
Species Reactivity	Hu
Specificity	The antibody detects endogenous level of total CCNB1 protein.
Immunogen Type	Peptide
Immunogen Description	Synthetic peptide corresponding to a region derived from 61-74 amino acids of Human cyclin B1
Target Name	CCNB1
Other Names	cyclin B1, CCNB
Accession No.	Swiss-Prot:P14635Gene ID:891;
Uniprot	P14635
GeneID	891;
Formulation	Rabbit IgG in pH7.4 PBS, 0.05% NaN ₃ , 40% Glycerol.
Storage	Store at -20°C/1 year

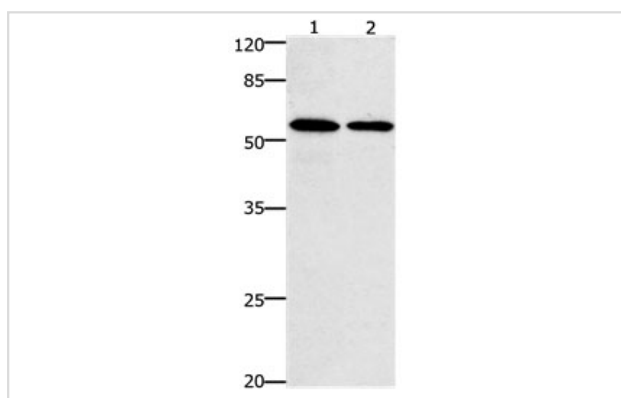
Application Details

Predicted MW: 48kd

ELISA: 1:1000-1:5000

Western blotting: 1:1000-1:5000

Images



Gel: 10%SDS-PAGE

Lane1: HeLa cell lysate

Lane2: Jurkat cell lysate

Lysates: 30ug per lane

Primary antibody: 1/250 dilution

Secondary antibody: Goat anti Rabbit IgG - H&L (HRP) at 1/10000 dilution

Exposure time: 1.5 minutes

Background

G2/mitotic-specific cyclin-B1 is a protein that in humans is encoded by the CCNB1 gene. The protein encoded by this gene is a regulatory protein involved in mitosis. The gene product complexes with p34(cdc2) to form the maturation-promoting factor (MPF). Two alternative transcripts have been

found, a constitutively expressed transcript and a cell cycle-regulated transcript, that is expressed predominantly during G2/M phase. The different transcripts result from the use of alternate transcription initiation sites.

Note: This product is for in vitro research use only