

## DRD1 Antibody

Catalog No: #31180

Package Size: #31180-1 50ul #31180-2 100ul

Orders: order@signalwayantibody.com

Support: tech@signalwayantibody.com

## Description

Product Name	DRD1 Antibody
Host Species	Rabbit
Clonality	Polyclonal
Applications	ELISA WB IHC
Species Reactivity	Hu
Specificity	The antibody detects endogenous level of total DRD1 protein.
Immunogen Type	Peptide-KLH
Immunogen Description	Synthetic peptide of human DRD1
Target Name	DRD1
Other Names	Dopamine receptor D1, DADR, DRD1A
Accession No.	Swiss-Prot:P21728Gene ID:1812;
Uniprot	P21728
GeneID	1812;
Concentration	1.1 mg/ml
Formulation	Rabbit IgG in pH7.4 PBS, 0.05% NaN <sub>3</sub> , 40% Glycerol.
Storage	Store at -20°C/1 year

## Application Details

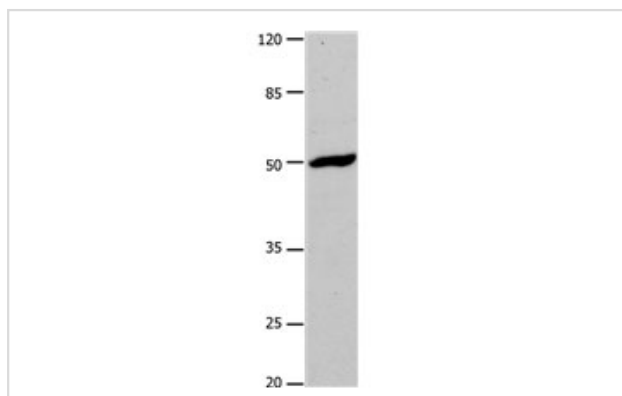
Predicted MW: 49kd

ELISA: 1:500-1:5000

Western blotting: 1:1000-1:5000

Immunohistochemistry: 1:25-1:100

## Images



Gel: 10%SDS-PAGE

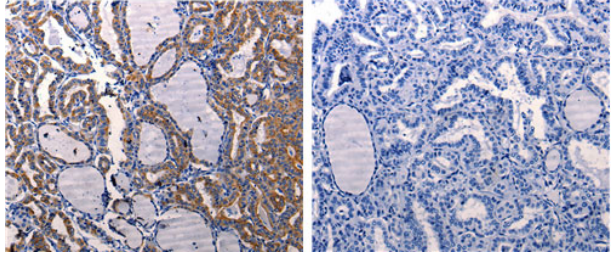
Lysate: 30 µg Hela cell lysate

Primary antibody: 1/1000 dilution

Secondary antibody: Donkey anti Rabbit IgG - H&amp;L (HRP) at

1/5000 dilution

Exposure time: 1 minute



The image on the left is immunohistochemistry of paraffin-embedded Human thyroid cancer tissue using 31180(DRD1 Antibody) at dilution 1/50, on the right is treated with the synthetic peptide.

## Background

This gene encodes the D1 subtype of the dopamine receptor. The D1 subtype is the most abundant dopamine receptor in the central nervous system. This G-protein coupled receptor stimulates adenylyl cyclase and activates cyclic AMP-dependent protein kinases. D1 receptors regulate neuronal growth and development, mediate some behavioral responses, and modulate dopamine receptor D2-mediated events. Alternate transcription initiation sites result in two transcript variants of this gene.

Note: This product is for in vitro research use only