

DRD4 Antibody

Catalog No: #31181

Package Size: #31181-1 50ul #31181-2 100ul

Orders: order@signalwayantibody.com

Support: tech@signalwayantibody.com

Description

Product Name	DRD4 Antibody
Host Species	Rabbit
Clonality	Polyclonal
Applications	ELISA WB IHC
Species Reactivity	Hu
Specificity	The antibody detects endogenous level of total DRD4 protein.
Immunogen Type	Peptide-KLH
Immunogen Description	Synthetic peptide corresponding to a region derived from 2-15 amino acids of Human Dopamine receptor D4
Target Name	DRD4
Other Names	Dopamine receptor D4 , D4DR
Accession No.	Swiss-Prot:P21917Gene ID:1815;
Uniprot	P21917
GeneID	1815;
Formulation	Rabbit IgG in pH7.4 PBS, 0.05% NaN ₃ , 40% Glycerol.
Storage	Store at -20°C/1 year

Application Details

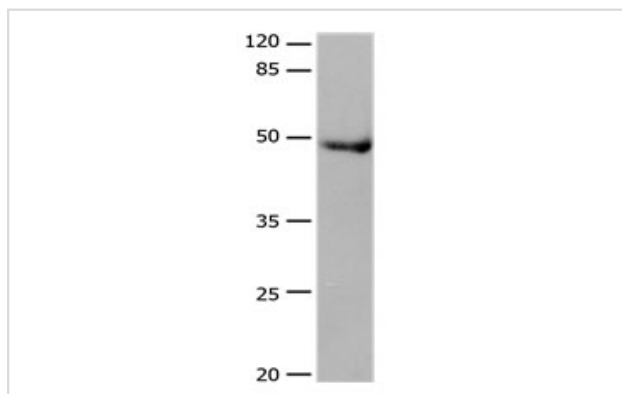
Predicted MW: 48kd

ELISA: 1:500-1:5000

Western blotting: 1:500-1:2000

Immunohistochemistry: 1:25-1:100

Images



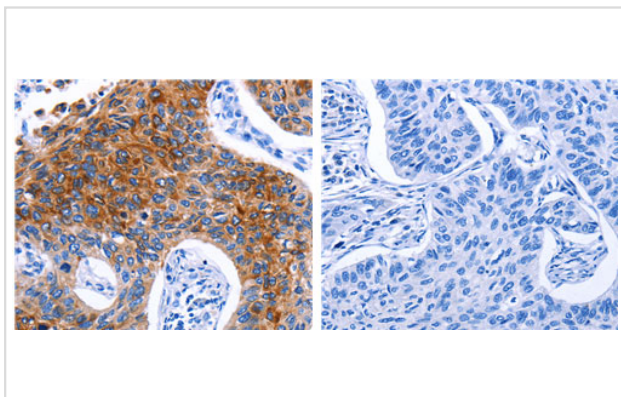
Gel: 10%SDS-PAGE

Lysate: 30 µg Human liver cancer tissue lysate

Primary antibody: 1/600 dilution

Secondary antibody: Donkey anti Rabbit IgG - H&L (HRP) at 1/5000 dilution

Exposure time: 1 minute



The image on the left is immunohistochemistry of paraffin-embedded Human lung cancer tissue using 31181(DRD4 Antibody) at dilution 1/30, on the right is treated with the synthetic peptide.

Background

This gene encodes the D4 subtype of the dopamine receptor. The D4 subtype is a G-protein coupled receptor which inhibits adenylyl cyclase. It is a target for drugs which treat schizophrenia and Parkinson disease. Mutations in this gene have been associated with various behavioral phenotypes, including autonomic nervous system dysfunction, attention deficit/hyperactivity disorder, and the personality trait of novelty seeking. This gene contains a polymorphic number (2-10 copies) of tandem 48 nt repeats; the sequence shown contains four repeats.

Note: This product is for in vitro research use only