

DISC1 Antibody

Catalog No: #31185

Package Size: #31185-1 50ul #31185-2 100ul

Orders: order@signalwayantibody.com

Support: tech@signalwayantibody.com

Description

Product Name	DISC1 Antibody
Host Species	Rabbit
Clonality	Polyclonal
Applications	ELISA WB IHC
Species Reactivity	Hu
Specificity	The antibody detects endogenous level of total DISC1 protein.
Immunogen Type	Peptide-KLH
Immunogen Description	Synthetic peptide corresponding to a region derived from 737-750 amino acids of Human disrupted in schizophrenia 1
Target Name	DISC1
Other Names	disrupted in schizophrenia 1, SCZD9, C1orf136
Accession No.	Swiss-Prot:Q9NRI5Gene ID:27185;
Uniprot	Q9NRI5
GeneID	27185;
Formulation	Rabbit IgG in pH7.4 PBS, 0.05% NaN ₃ , 40% Glycerol.
Storage	Store at -20°C/1 year

Application Details

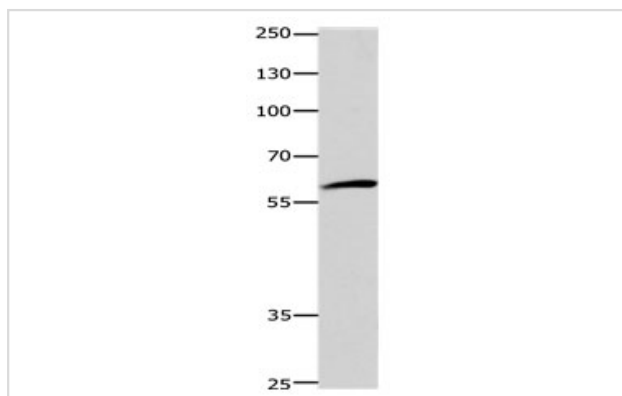
Predicted MW: 60kd

ELISA: 1:1000-1:5000

Western blotting: 1:1000-1:5000

Immunohistochemistry: 1:50-1:200

Images



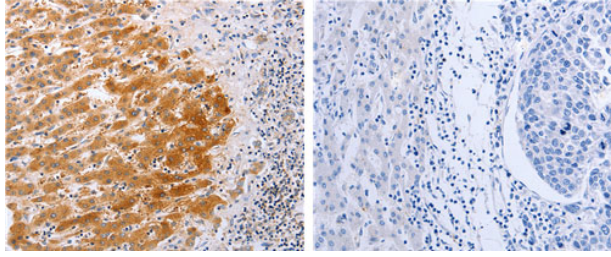
Gel: 8%SDS-PAGE

Lysate: 40 µg 293T cell lysate

Primary antibody: 1/1200 dilution

Secondary antibody: Goat anti Rabbit IgG - H&L (HRP) at 1/10000 dilution

Exposure time: 1 minute



The image on the left is immunohistochemistry of paraffin-embedded Human liver cancer tissue using 31185 (DISC1 Antibody) at dilution 1/50, on the right is treated with the synthetic peptide.

Background

This gene encodes a protein with multiple coiled coil motifs which is located in the nucleus, cytoplasm and mitochondria. The protein is involved in neurite outgrowth and cortical development through its interaction with other proteins. This gene is disrupted in a t(1;11)(q42.1;q14.3) translocation which segregates with schizophrenia and related psychiatric disorders in a large Scottish family. Alternate transcriptional splice variants, encoding different isoforms, have been characterized.

Note: This product is for in vitro research use only