

DNM1 Antibody

Catalog No: #31186

Package Size: #31186-1 50ul #31186-2 100ul

Orders: order@signalwayantibody.com

Support: tech@signalwayantibody.com

Description

Product Name	DNM1 Antibody
Host Species	Rabbit
Clonality	Polyclonal
Applications	ELISA WB
Species Reactivity	Hu Ms Rt
Specificity	The antibody detects endogenous level of total DNM1 protein.
Immunogen Type	Peptide-KLH
Immunogen Description	Synthetic peptide corresponding to a region derived from 850-863 amino acids of Human Dynamin-1
Target Name	DNM1
Other Names	Dynamin-1, DNM
Accession No.	Swiss-Prot:Q05193Gene ID:1759;
Uniprot	Q05193
GeneID	1759;
Formulation	Rabbit IgG in pH7.4 PBS, 0.05% NaN ₃ , 40% Glycerol.
Storage	Store at -20°C/1 year

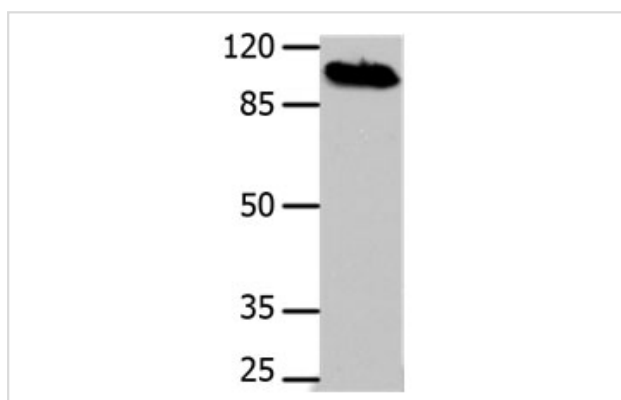
Application Details

Predicted MW: 97kd

ELISA: 1:1000-1:5000

Western blotting: 1:500-1:2000

Images



Gel: 8%SDS-PAGE

Lysate: 40 µg Mouse brain tissue lysate

Primary antibody: 1/700 dilution

Secondary antibody: Donkey anti Rabbit IgG - H&L (HRP) at 1/5000 dilution

Exposure time: 30 seconds

Background

This gene encodes a member of the dynamin subfamily of GTP-binding proteins. The encoded protein possesses unique mechanochemical properties used to tubulate and sever membranes, and is involved in clathrin-mediated endocytosis and other vesicular trafficking processes. Actin and other

cytoskeletal proteins act as binding partners for the encoded protein, which can also self-assemble leading to stimulation of GTPase activity. More than sixty highly conserved copies of the 3' region of this gene are found elsewhere in the genome, particularly on chromosomes Y and 15. Alternatively spliced transcript variants encoding different isoforms have been described.

Note: This product is for in vitro research use only