

SLC1A6 Antibody

Catalog No: #31188

Package Size: #31188-1 50ul #31188-2 100ul

Orders: order@signalwayantibody.com

Support: tech@signalwayantibody.com

Description

Product Name	SLC1A6 Antibody
Host Species	Rabbit
Clonality	Polyclonal
Applications	ELISA WB
Species Reactivity	Hu Ms
Specificity	The antibody detects endogenous level of total SLC1A6 protein.
Immunogen Type	Peptide-KLH
Immunogen Description	Synthetic peptide corresponding to a region derived from 205-220 amino acids of Human Solute carrier family 1 member 6
Target Name	SLC1A6
Other Names	Solute carrier family 1 member 6, EAAT4
Accession No.	Swiss-Prot:P48664Gene ID:6511;
Uniprot	P48664
GeneID	6511;
Formulation	Rabbit IgG in pH7.4 PBS, 0.05% NaN ₃ , 40% Glycerol.
Storage	Store at -20°C/1 year

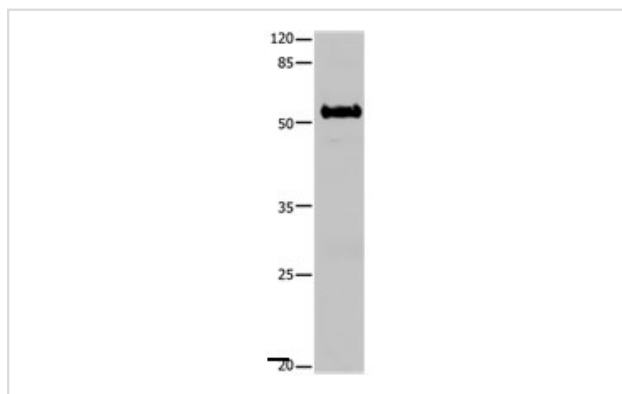
Application Details

Predicted MW: 62kd

ELISA: 1:500-1:5000

Western blotting: 1:500-1:1000

Images



Gel: 10%SDS-PAGE

Lysate: 30 µg Mouse brain tissue lysate

Primary antibody: 1/600 dilution

Secondary antibody: Donkey anti Rabbit IgG - H&L (HRP) at 1/5000 dilution

Exposure time: 1 minute

Background

Excitatory amino-acid transporter 4 (EAAT4) is a protein that in humans is encoded by the SLC1A6 gene. It is a member of the high-affinity glutamate

and neutral amino acid-transporter family. It transports L-glutamate and also L- and D-aspartate predominantly in the cerebellar cortex. Genetic polymorphism in the SLC1A6 gene is suggested to be referred to glutamatergic dysfunction in schizophrenia pathogenesis.

Note: This product is for in vitro research use only