

ENPP7 Antibody

Catalog No: #31192

Package Size: #31192-1 50ul #31192-2 100ul

Orders: order@signalwayantibody.comSupport: tech@signalwayantibody.com

Description

Product Name	ENPP7 Antibody
Host Species	Rabbit
Clonality	Polyclonal
Applications	ELISA WB IHC
Species Reactivity	Hu
Specificity	The antibody detects endogenous level of total ENPP7 protein.
Immunogen Type	Peptide-KLH
Immunogen Description	Synthetic peptide corresponding to a region derived from 290-305 amino acids of Human ectonucleotide pyrophosphatase/phosphodiesterase 7
Target Name	ENPP7
Other Names	ectonucleotide pyrophosphatase/phosphodiesterase 7, ALK-SMase
Formulation	Rabbit IgG in pH7.4 PBS, 0.05% NaN ₃ , 40% Glycerol.
Storage	Store at -20°C/1 year

Application Details

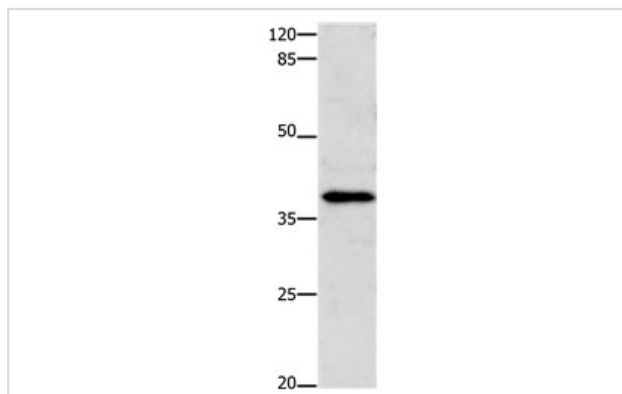
Predicted MW: 52kd

ELISA: 1:1000-1:5000

Western blotting: 1:1000-1:5000

Immunohistochemistry: 1:50-1:200

Images



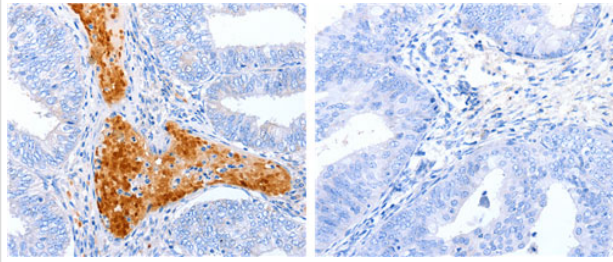
Gel: 10%SDS-PAGE

Lysate: 30 µg 293T cell lysate

Primary antibody: 1/700 dilution

Secondary antibody: Goat anti Rabbit IgG - H&L (HRP) at 1/10000 dilution

Exposure time: 1 minute



The image on the left is immunohistochemistry of paraffin-embedded Human cervical cancer tissue using 31192(ENPP7 Antibody) at dilution 1/50, on the right is treated with the synthetic peptide.

Background

Ectonucleotide pyrophosphatase/phosphodiesterase family member 7 (E-NPP 7) also known as alkaline sphingomyelin phosphodiesterase (Alk-SMase) or intestinal alkaline sphingomyelinase is an enzyme that in humans is encoded by the ENPP7 gene. Converts sphingomyelin to ceramide. Also has phospholipase C activity toward palmitoyl lyso-phosphocholine. Does not appear to have nucleotide pyrophosphatase activity. Inhibited in a dose dependent manner by ATP, imidazole, orthovanadate and zinc ion. Not inhibited by ADP, AMP and EDTA. Detected in the colon (at protein level). Expressed in the duodenum, jejunum and liver and at low levels in the ileum. Expression was very low in the esophagus, stomach and colon.

Note: This product is for in vitro research use only